

# Anti-KDM1B Antibody (R4B31)

## Summary

---

<b>Catalog No.</b>	RHN94701
<b>Clone ID</b>	R4B31
<b>Host species</b>	Mouse
<b>Tested applications</b>	ELISA: 1:10000, FCM: 1:200-1:400, IF: 1:200-1:1000, IHC: 1:200-1:1000
<b>Species reactivity</b>	Human
<b>Form</b>	Liquid
<b>Storage buffer</b>	0.01M PBS, pH 7.4, 0.05% Sodium Azide.
<b>Concentration</b>	1 mg/ml
<b>Purity</b>	>95% as determined by SDS-PAGE.
<b>Clonality</b>	Monoclonal
<b>Isotype</b>	IgG1
<b>Applications</b>	ELISA, FCM, IF, IHC
<b>Target</b>	AOF1, Lysine-specific histone demethylase 1B, Lysine-specific histone demethylase 2, KDM1B, LSD2, C6orf193, Flavin-containing amine oxidase domain-containing protein 1
<b>Purification</b>	Protein A/G purified from cell culture supernatant.
<b>Endotoxin level</b>	Please contact with the lab for this information.
<b>Accession</b>	Q8NB78

**Stability and Storage**

Use a manual defrost freezer and avoid repeated freeze-thaw cycles.

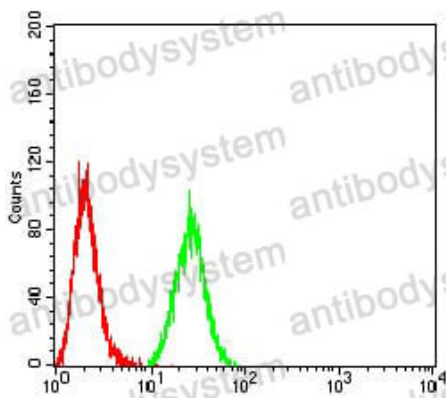
Store at 4°C short term (1-2 weeks). Store at -20°C 12 months. Store at -80°C long term.

**Note**

For research use only.

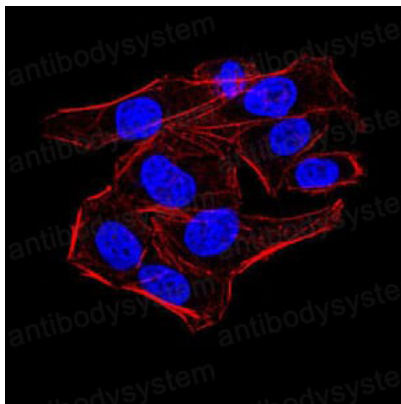
**Data Image**

---



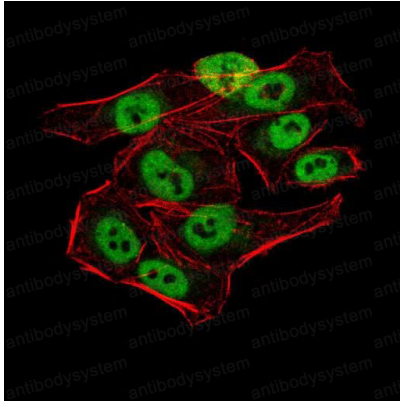
Flow Cytometry

Flow cytometric analysis of HeLa cells using AOF1 mouse mAb (green) and negative control (red).

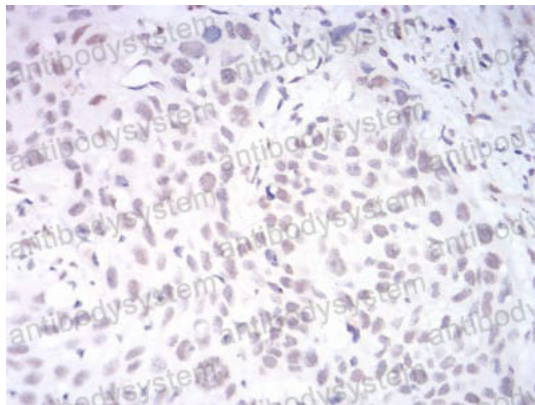


Immunofluorescence

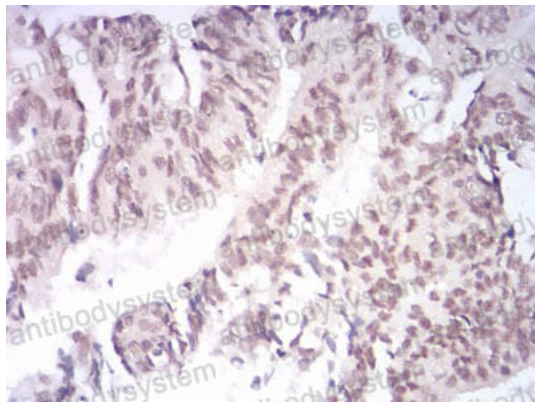
Immunofluorescence analysis of HeLa cells using AOF1 mouse mAb. Blue: DRAQ5 fluorescent DNA dye. Red: Actin filaments have been labeled with Alexa Fluor- 555 phalloidin.

**Immunofluorescence**

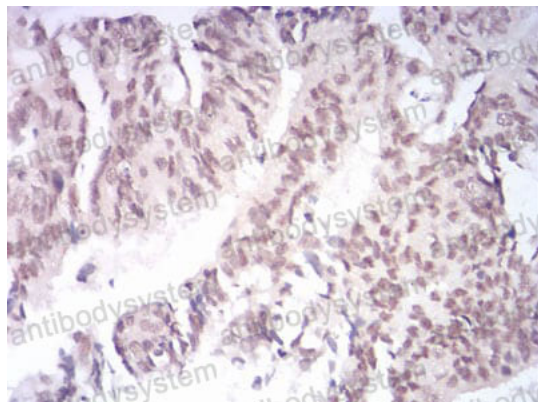
Immunofluorescence analysis of HeLa cells using AOF1 mouse mAb (green). Blue: DRAQ5 fluorescent DNA dye. Red: Actin filaments have been labeled with Alexa Fluor- 555 phalloidin.

**Immunohistochemical**

Immunohistochemical analysis of paraffin-embedded human esophageal cancer tissues using AOF1 mouse mAb with DAB staining.

**Immunohistochemical**

Immunohistochemical analysis of paraffin-embedded human rectum cancer tissues using AOF1 mouse mAb with DAB staining.



Immunohistochemical

Immunohistochemical analysis of paraffin-embedded human rectum cancer tissues using AOF1 mouse mAb with DAB staining.