

Anti-RAB11FIP1 Antibody (R4B29)

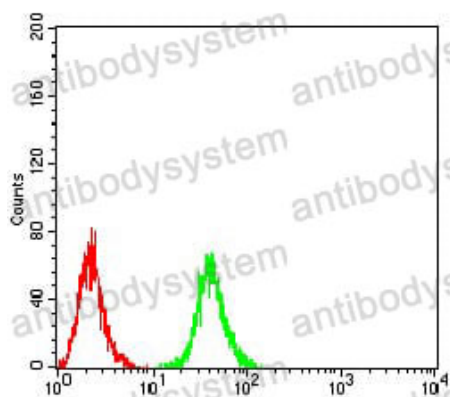
Summary

Catalog No.	RHN94502
Clone ID	R4B29
Host species	Mouse
Tested applications	ELISA: 1:10000, FCM: 1:200-1:400, IHC: 1:200-1:1000, WB: 1:500-1:2000
Species reactivity	Human, Mouse
Form	Liquid
Storage buffer	0.01M PBS, pH 7.4, 0.05% Sodium Azide.
Concentration	1 mg/ml
Purity	>95% as determined by SDS-PAGE.
Clonality	Monoclonal
Isotype	IgG1
Applications	ELISA, FCM, IHC, WB
Target	RAB11FIP1, RCP, Rab11 family-interacting protein 1, Rab-coupling protein, Rab11-FIP1
Purification	Protein A/G purified from cell culture supernatant.
Endotoxin level	Please contact with the lab for this information.
Accession	Q6WKZ4
Stability and Storage	Use a manual defrost freezer and avoid repeated freeze-thaw cycles. Store at 4°C short term (1-2 weeks). Store at -20°C 12 months. Store at -80°C long term.

Note

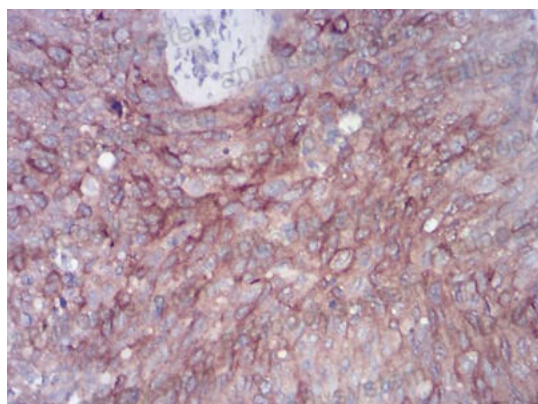
For research use only.

Data Image



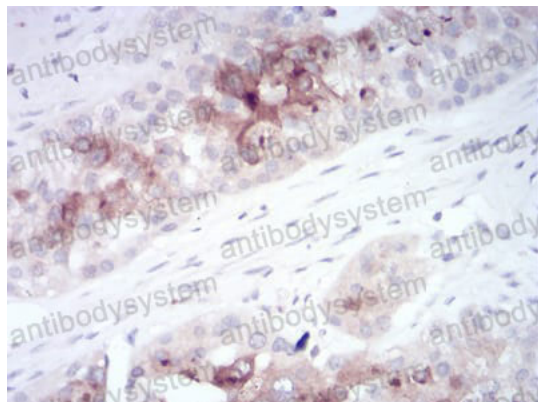
Flow Cytometry

Flow cytometric analysis of Raji cells using RAB11FIP1 mouse mAb (green) and negative control (red).



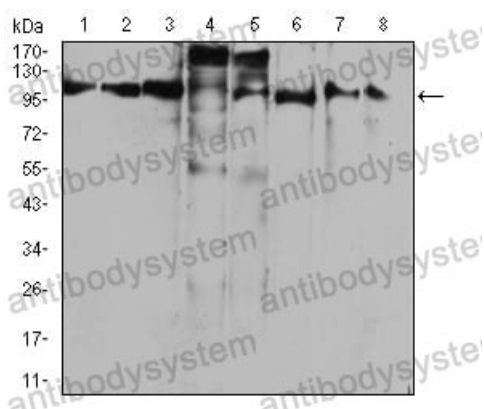
Immunohistochemical

Immunohistochemical analysis of paraffin-embedded human cervical cancer tissues using RAB11FIP1 mouse mAb with DAB staining.



Immunohistochemical

Immunohistochemical analysis of paraffin-embedded human ovarian cancer tissues using RAB11FIP1 mouse mAb with DAB staining.



Western blot

Western blot analysis using RAB11FIP1 mouse mAb against Raji (1), A431 (2), HCT116 (3), LOVO (4), SW620 (5), SW480 (6), HepG2 (7), and NIH3T3 (8) cell lysate.