

# Anti-KBTBD8 Antibody (R4B27)

## Summary

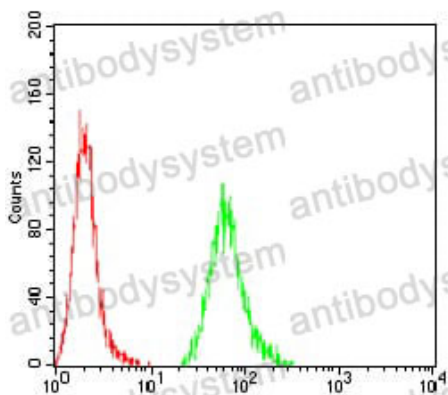
---

<b>Catalog No.</b>	RHN94401
<b>Clone ID</b>	R4B27
<b>Host species</b>	Mouse
<b>Tested applications</b>	ELISA: 1:10000, FCM: 1:200-1:400, WB: 1:500-1:2000
<b>Species reactivity</b>	Human
<b>Form</b>	Liquid
<b>Storage buffer</b>	0.01M PBS, pH 7.4, 0.05% Sodium Azide.
<b>Concentration</b>	1 mg/ml
<b>Purity</b>	>95% as determined by SDS-PAGE.
<b>Clonality</b>	Monoclonal
<b>Isotype</b>	IgG1
<b>Applications</b>	ELISA, FCM, WB
<b>Target</b>	T-cell activation kelch repeat protein, TA-KRP, KIAA1842, TAKRP, Kelch repeat and BTB domain-containing protein 8, KBTBD8
<b>Purification</b>	Protein A/G purified from cell culture supernatant.
<b>Endotoxin level</b>	Please contact with the lab for this information.
<b>Accession</b>	Q8NFY9
<b>Stability and Storage</b>	Use a manual defrost freezer and avoid repeated freeze-thaw cycles. Store at 4°C short term (1-2 weeks). Store at -20°C 12 months. Store at -80°C long term.

**Note**

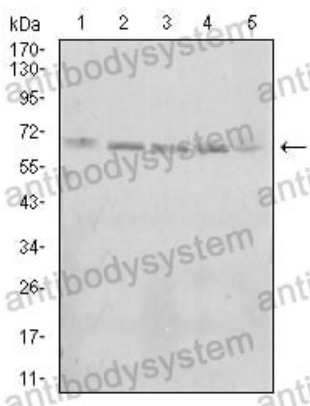
For research use only.

## Data Image



Flow Cytometry

Flow cytometric analysis of A431 cells using KBTBD8 mouse mAb (green) and negative control (red).



Western blot

Western blot analysis using KBTBD8 mouse mAb against A431 (1), Jurkat (2), Hela (3), K562 (4), and HEK293 (5) cell lysate.