

# Anti-SSH1 Antibody (R4B25)

## Summary

---

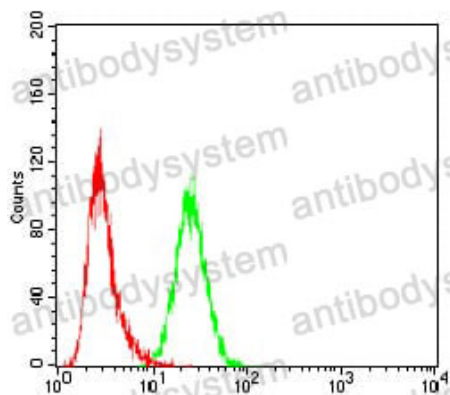
|                              |   |
|------------------------------|---|
| <b>Catalog No.</b>           | RHN94301  |
| <b>Clone ID</b>              | R4B25   |
| <b>Host species</b>          | Mouse   |
| <b>Tested applications</b>   | ELISA: 1:10000, FCM: 1:200-1:400, IHC: 1:200-1:1000   |
| <b>Species reactivity</b>    | Human   |
| <b>Form</b>                  | Liquid  |
| <b>Storage buffer</b>        | 0.01M PBS, pH 7.4, 0.05% Sodium Azide.  |
| <b>Concentration</b>         | 1 mg/ml   |
| <b>Purity</b>                | >95% as determined by SDS-PAGE.   |
| <b>Clonality</b>             | Monoclonal  |
| <b>Isotype</b>               | IgG1  |
| <b>Applications</b>          | ELISA, FCM, IHC   |
| <b>Target</b>                | SSH-1L, hSSH-1L, SSH1, SSH1L, KIAA1298, Protein phosphatase Slingshot homolog 1, SSH-like protein 1   |
| <b>Purification</b>          | Protein A/G purified from cell culture supernatant.   |
| <b>Endotoxin level</b>       | Please contact with the lab for this information.   |
| <b>Accession</b>             | Q8WYL5  |
| <b>Stability and Storage</b> | Use a manual defrost freezer and avoid repeated freeze-thaw cycles.<br>Store at 4°C short term (1-2 weeks). Store at -20°C 12 months. Store at -80°C long term. |

**Note**

For research use only.

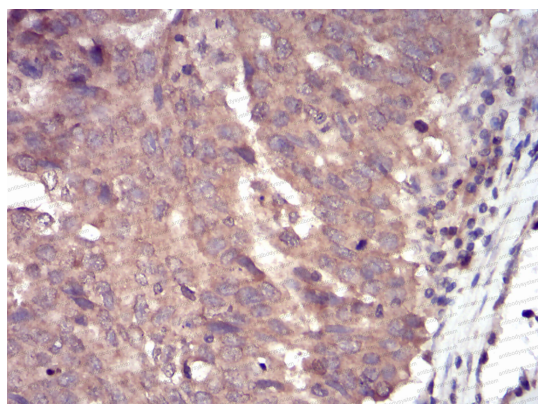
**Data Image**

---



Flow Cytometry

Flow cytometric analysis of Hela cells using SLINGSHOT-1L mouse mAb (green) and negative control (red).



Immunohistochemical

Immunohistochemical analysis of paraffin-embedded human ovarian cancer tissues using SLINGSHOT-1L mouse mAb with DAB staining.