

Anti-CTNNBL1 Antibody (R4B17)

Summary

Catalog No.	RHN94001
Clone ID	R4B17
Host species	Mouse
Tested applications	ELISA: 1:10000, FCM: 1:200-1:400, IF: 1:200-1:1000, IHC: 1:200-1:1000, WB: 1:500-1:2000
Species reactivity	Human
Form	Liquid
Storage buffer	0.01M PBS, pH 7.4, 0.05% Sodium Azide.
Concentration	1 mg/ml
Purity	>95% as determined by SDS-PAGE.
Clonality	Monoclonal
Isotype	IgG1
Applications	ELISA, FCM, IF, IHC, WB
Target	Beta-catenin-like protein 1, Testis development protein NYD-SP19, C20orf33, NAP, Nuclear-associated protein, CTNNBL1
Purification	Protein A/G purified from cell culture supernatant.
Endotoxin level	Please contact with the lab for this information.
Accession	Q8WYA6

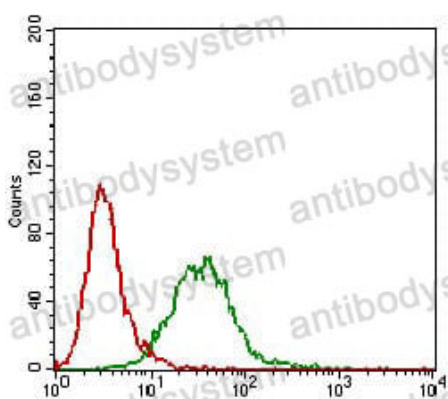
Stability and Storage

Use a manual defrost freezer and avoid repeated freeze-thaw cycles.

Store at 4°C short term (1-2 weeks). Store at -20°C 12 months. Store at -80°C long term.

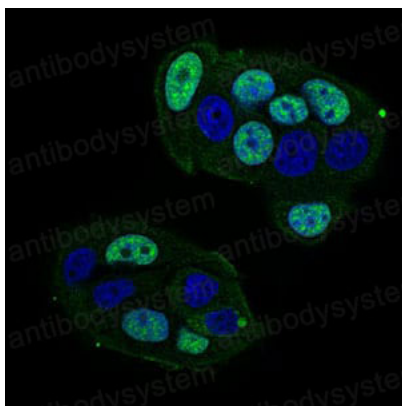
Note

For research use only.

Data Image

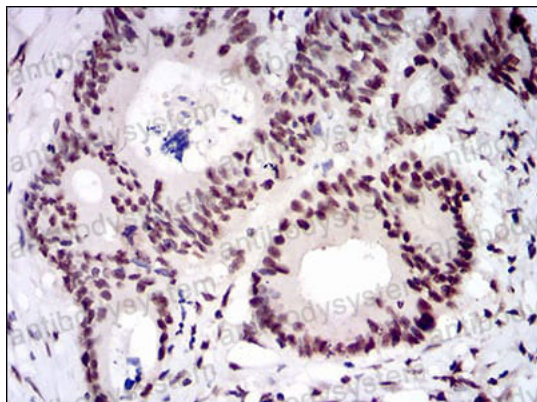
Flow Cytometry

Flow cytometric analysis of Hela cells using CTNNBL1 mouse mAb (green) and negative control (red).



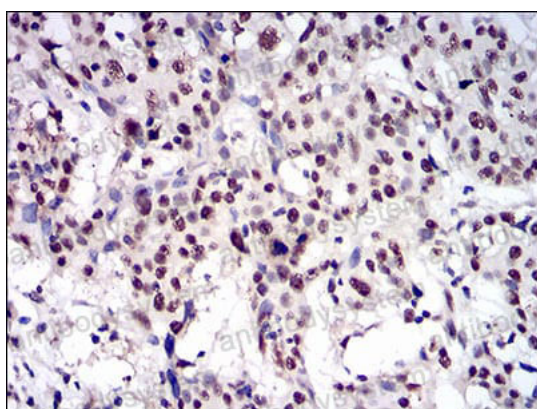
Immunofluorescence

Immunofluorescence analysis of MCF-7 cells using CTNNBL1 mouse mAb (green). Blue: DRAQ5 fluorescent DNA dye.



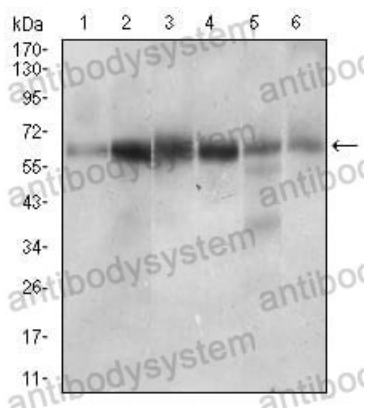
Immunohistochemical

Immunohistochemical analysis of paraffin-embedded human colon cancer tissues using CTNNBL1 mouse mAb with DAB staining.



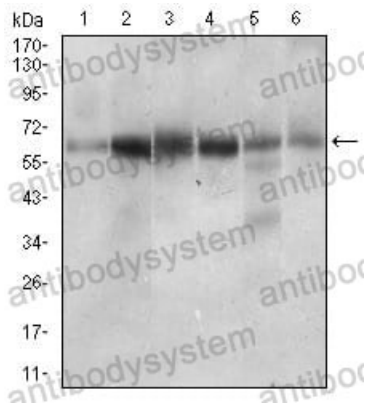
Immunohistochemical

Immunohistochemical analysis of paraffin-embedded human esophageal cancer tissues using CTNNBL1 mouse mAb with DAB staining.



Western blot

Western blot analysis using CTNNBL1 mouse mAb against Hela (1), Jurkat (2), HEK293 (3), A431 (4), HepG2 (5), RAJI (6) cell lysate.



Western blot

Western blot analysis using CTNNB1 mouse mAb against Hela (1), Jurkat (2), HEK293 (3), A431 (4), HepG2 (5), RAJI (6) cell lysate.