

Anti-KHDRBS2 Antibody (R4B14)

Summary

Catalog No.	RHN93801
Clone ID	R4B14
Host species	Mouse
Tested applications	ELISA: 1:10000, FCM: 1:200-1:400, IHC: 1:200-1:1000, WB: 1:500-1:2000
Species reactivity	Human, Mouse
Form	Liquid
Storage buffer	0.01M PBS, pH 7.4, 0.05% Sodium Azide.
Concentration	1 mg/ml
Purity	>95% as determined by SDS-PAGE.
Clonality	Monoclonal
Isotype	IgG1
Applications	ELISA, FCM, IHC, WB
Target	KH domain-containing, RNA-binding, signal transduction-associated protein 2, SLM1, hSLM-1, Sam68-like mammalian protein 1, SLM-1, KHDRBS2
Purification	Protein A/G purified from cell culture supernatant.
Endotoxin level	Please contact with the lab for this information.
Accession	Q5VWX1

Stability and Storage

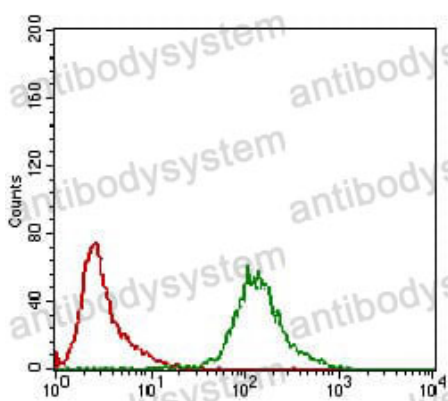
Use a manual defrost freezer and avoid repeated freeze-thaw cycles.

Store at 4°C short term (1-2 weeks). Store at -20°C 12 months. Store at -80°C long term.

Note

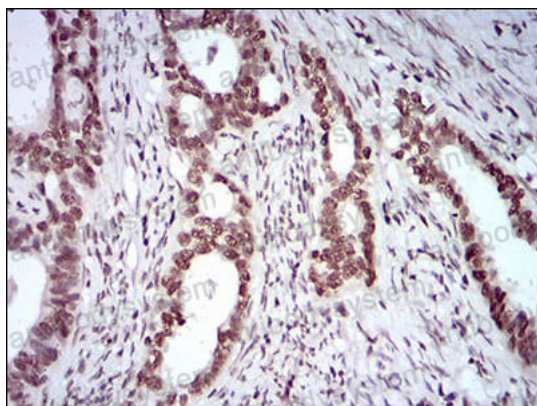
For research use only.

Data Image



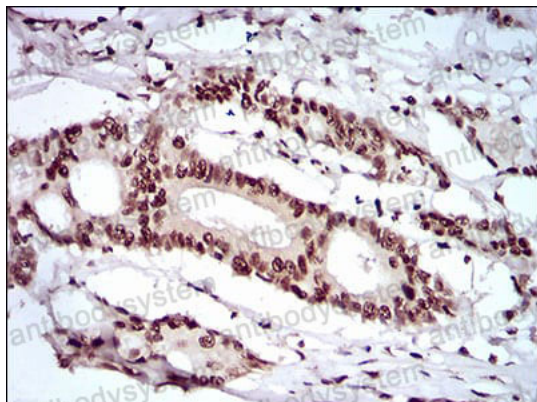
Flow Cytometry

Flow cytometric analysis of K562 cells using KHDRBS2 mouse mAb (green) and negative control (red).



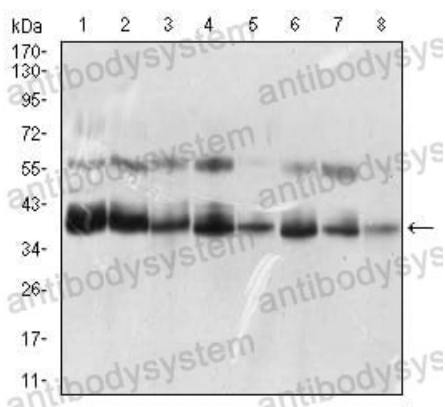
Immunohistochemical

Immunohistochemical analysis of paraffin-embedded human cervical cancer tissues using KHDRBS2 mouse mAb with DAB staining.



Immunohistochemical

Immunohistochemical analysis of paraffin-embedded human colon cancer tissues using KHDRBS2 mouse mAb with DAB staining.



Western blot

Western blot analysis using KHDRBS2 mouse mAb against K562 (1), HEK293 (2), NTERA-2 (3), Hela (4), HepG2 (5), Jurkat (6), A431 (7), NIH/3T3 (8) cell lysate.