

Anti-MLXIPL Antibody (R4B13)

Summary

Catalog No.	RHN93701
Clone ID	R4B13
Host species	Mouse
Tested applications	ELISA: 1:10000, IF: 1:200-1:1000
Species reactivity	Human
Form	Liquid
Storage buffer	0.01M PBS, pH 7.4, 0.05% Sodium Azide.
Concentration	1 mg/ml
Purity	>95% as determined by SDS-PAGE.
Clonality	Monoclonal
Isotype	IgG1
Applications	ELISA, IF
Target	WS-bHLH, WBSCR14, MLX-interacting protein-like, MLXIPL, Class D basic helix-loop-helix protein 14, WS basic-helix-loop-helix leucine zipper protein, BHLHD14, ChREBP, MIO, Williams-Beuren syndrome chromosomal region 14 protein, MLX interactor, bHLHD14, Carbohydrate-responsive element-binding protein
Purification	Protein A/G purified from cell culture supernatant.
Endotoxin level	Please contact with the lab for this information.
Accession	Q9NP71

Stability and Storage

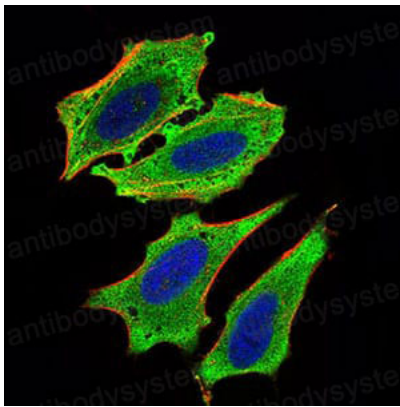
Use a manual defrost freezer and avoid repeated freeze-thaw cycles.

Store at 4°C short term (1-2 weeks). Store at -20°C 12 months. Store at -80°C long term.

Note

For research use only.

Data Image



Immunofluorescence

Immunofluorescence analysis of HeLa cells using MLXIPL mouse mAb (green). Blue: DRAQ5 fluorescent DNA dye. Red: Actin filaments have been labeled with Alexa Fluor-555 phalloidin.