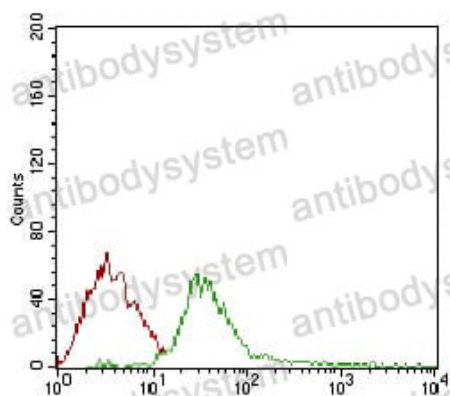


Anti-DIS3L2 Antibody (R4B12)

Summary

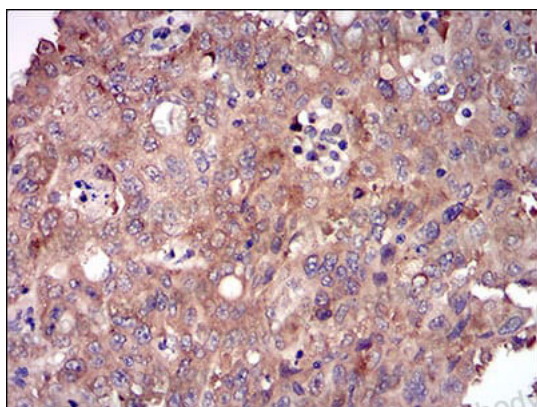
Catalog No.	RHN93601
Clone ID	R4B12
Host species	Mouse
Tested applications	ELISA: 1:10000, FCM: 1:200-1:400, IHC: 1:200-1:1000, WB: 1:500-1:2000
Species reactivity	Human
Form	Liquid
Storage buffer	0.01M PBS, pH 7.4, 0.05% Sodium Azide.
Concentration	1 mg/ml
Purity	>95% as determined by SDS-PAGE.
Clonality	Monoclonal
Isotype	IgG1
Applications	ELISA, FCM, IHC, WB
Target	FAM6A, DIS3-like exonuclease 2, DIS3L2, hDIS3L2
Purification	Protein A/G purified from cell culture supernatant.
Endotoxin level	Please contact with the lab for this information.
Accession	Q8IYB7
Stability and Storage	Use a manual defrost freezer and avoid repeated freeze-thaw cycles. Store at 4°C short term (1-2 weeks). Store at -20°C 12 months. Store at -80°C long term.
Note	For research use only.

Data Image



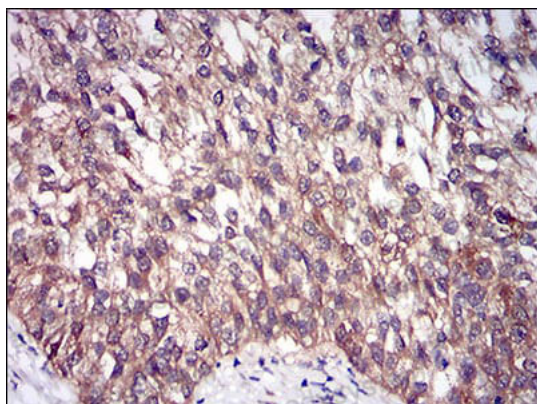
Flow Cytometry

Flow cytometric analysis of Jurkat cells using DIS3L2 mouse mAb (green) and negative control (red).



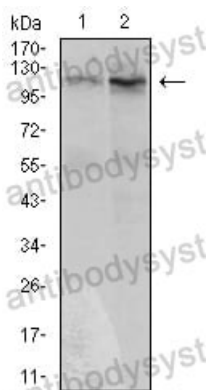
Immunohistochemical

Immunohistochemical analysis of paraffin-embedded human endometrial cancer tissues using DIS3L2 mouse mAb with DAB staining.



Immunohistochemical

Immunohistochemical analysis of paraffin-embedded human bladder cancer tissues using DIS3L2 mouse mAb with DAB staining.



Western blot

Western blot analysis using DIS3L2 mouse mAb against Hela (1) and HepG2 (2) cell lysate.