

Anti-ZFP42 Antibody (R4B09)

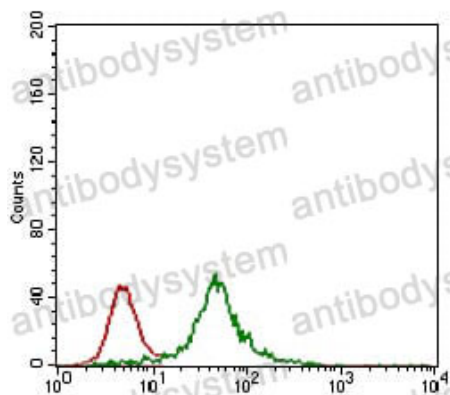
Summary

Catalog No.	RHN93401
Clone ID	R4B09
Host species	Mouse
Tested applications	ELISA: 1:10000, FCM: 1:200-1:400, IHC: 1:200-1:1000, WB: 1:500-1:2000
Species reactivity	Human, Mouse
Form	Liquid
Storage buffer	0.01M PBS, pH 7.4, 0.05% Sodium Azide.
Concentration	1 mg/ml
Purity	>95% as determined by SDS-PAGE.
Clonality	Monoclonal
Isotype	IgG1
Applications	ELISA, FCM, IHC, WB
Target	Reduced expression protein 1, Zinc finger protein 754, Zinc finger protein 42 homolog, REX1, ZFP42, Zfp-42, ZNF754, hREX-1, REX-1
Purification	Protein A/G purified from cell culture supernatant.
Endotoxin level	Please contact with the lab for this information.
Accession	Q96MM3
Stability and Storage	Use a manual defrost freezer and avoid repeated freeze-thaw cycles. Store at 4°C short term (1-2 weeks). Store at -20°C 12 months. Store at -80°C long term.

Note

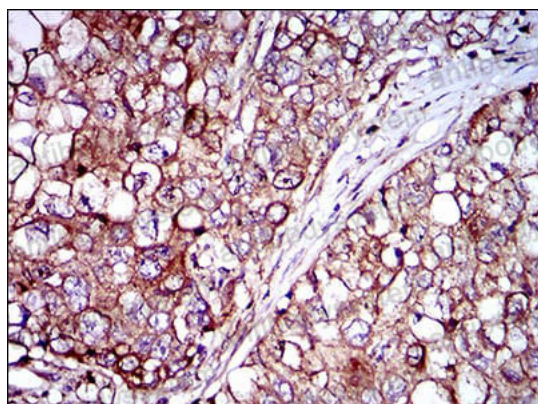
For research use only.

Data Image



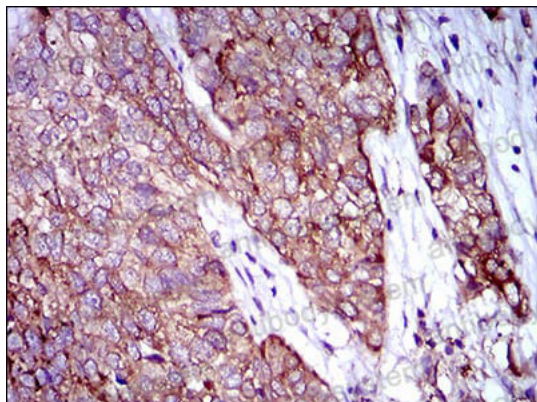
Flow Cytometry

Flow cytometric analysis of HEK293 cells using ZFP42 mouse mAb (green) and negative control (red).



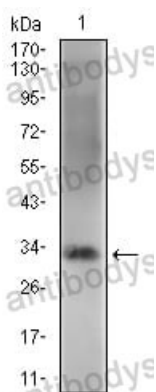
Immunohistochemical

Immunohistochemical analysis of paraffin-embedded human lung cancer tissues using ZFP42 mouse mAb with DAB staining.



Immunohistochemical

Immunohistochemical analysis of paraffin-embedded human bladder cancer tissues using ZFP42 mouse mAb with DAB staining.



Western blot

Western blot analysis using ZFP42 mouse mAb against NIH/3T3 cell lysate.