

# Anti-BPIFA2 Antibody (R4A99)

## Summary

---

|                            |  |
|----------------------------|--|
| <b>Catalog No.</b>         | RHN92901   |
| <b>Clone ID</b>            | R4A99  |
| <b>Host species</b>        | Mouse  |
| <b>Tested applications</b> | ELISA: 1:10000, FCM: 1:200-1:400   |
| <b>Species reactivity</b>  | Human  |
| <b>Form</b>                | Liquid   |
| <b>Storage buffer</b>      | 0.01M PBS, pH 7.4, 0.05% Sodium Azide.   |
| <b>Concentration</b>       | 1 mg/ml  |
| <b>Purity</b>              | >95% as determined by SDS-PAGE.  |
| <b>Clonality</b>           | Monoclonal   |
| <b>Isotype</b>             | IgG1   |
| <b>Applications</b>        | ELISA, FCM   |
| <b>Target</b>              | BPI fold-containing family A member 2, SPLUNC2, Short palate, lung and nasal epithelium carcinoma-associated protein 2, BPIFA2, PSP, C20orf70, Parotid secretory protein |
| <b>Purification</b>        | Protein A/G purified from cell culture supernatant.  |
| <b>Endotoxin level</b>     | Please contact with the lab for this information.  |
| <b>Accession</b>           | Q96DR5   |

**Stability and Storage**

Use a manual defrost freezer and avoid repeated freeze-thaw cycles.

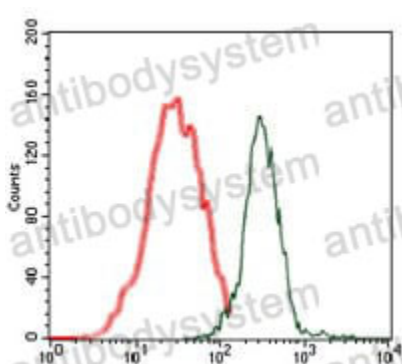
Store at 4°C short term (1-2 weeks). Store at -20°C 12 months. Store at -80°C long term.

**Note**

For research use only.

## Data Image

---



Flow Cytometry

Flow cytometric analysis of MCF-7 cells using human Splunc2 mouse mAb (green) and negative control (red).