

# Anti-BPIFB1 Antibody (R4A98)

## Summary

---

<b>Catalog No.</b>	RMN92802
<b>Clone ID</b>	R4A98
<b>Host species</b>	Mouse
<b>Tested applications</b>	ELISA: 1:10000, WB: 1:500-1:2000
<b>Species reactivity</b>	Mouse
<b>Form</b>	Liquid
<b>Storage buffer</b>	0.01M PBS, pH 7.4, 0.05% Sodium Azide.
<b>Concentration</b>	1 mg/ml
<b>Purity</b>	>95% as determined by SDS-PAGE.
<b>Clonality</b>	Monoclonal
<b>Isotype</b>	IgG1
<b>Applications</b>	ELISA, WB
<b>Target</b>	Long palate, lung and nasal epithelium carcinoma-associated protein 1, VEMSGP, C20orf114, von Ebner minor salivary gland protein, BPIFB1, BPI fold-containing family B member 1, LPLUNC1
<b>Purification</b>	Protein A/G purified from cell culture supernatant.
<b>Endotoxin level</b>	Please contact with the lab for this information.
<b>Accession</b>	Q61114

**Stability and Storage**

Use a manual defrost freezer and avoid repeated freeze-thaw cycles.

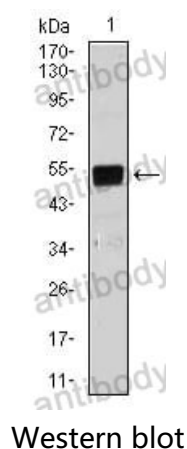
Store at 4°C short term (1-2 weeks). Store at -20°C 12 months. Store at -80°C long term.

**Note**

For research use only.

## Data Image

---



Western blot analysis using Lplunc1 mouse mAb against NIH3T3 (1) cell lysate.