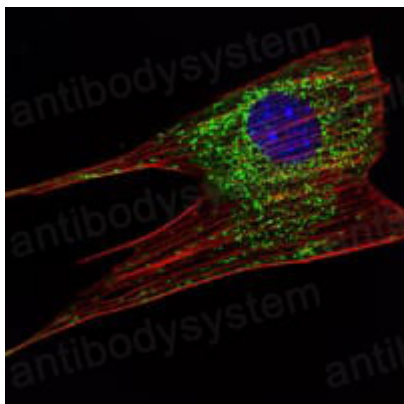


Anti-KLHL11 Antibody (R4A86)

Summary

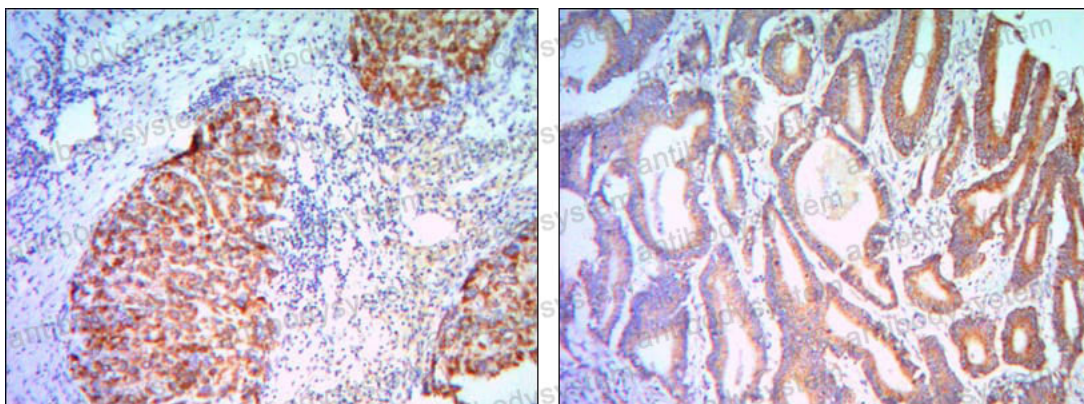
Catalog No.	RHN91902
Clone ID	R4A86
Host species	Mouse
Tested applications	IF: 1:200-1:1000, IHC: 1:200-1:1000, WB: 1:500-1:2000
Species reactivity	Human
Form	Liquid
Storage buffer	0.01M PBS, pH 7.4, 0.05% Sodium Azide.
Concentration	1 mg/ml
Purity	>95% as determined by SDS-PAGE.
Clonality	Monoclonal
Isotype	IgG1
Applications	IF, IHC, WB
Target	KLHL11, Kelch-like protein 11
Purification	Protein A/G purified from cell culture supernatant.
Endotoxin level	Please contact with the lab for this information.
Accession	Q9NVR0
Stability and Storage	Use a manual defrost freezer and avoid repeated freeze-thaw cycles. Store at 4°C short term (1-2 weeks). Store at -20°C 12 months. Store at -80°C long term.
Note	For research use only.

Data Image



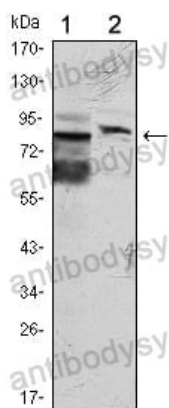
Immunofluorescence

Immunofluorescence analysis of NIH/3T3 cells using KLHL11 mouse mAb (green). Blue: DRAQ5 fluorescent DNA dye. Red: Actin filaments have been labeled with Alexa Fluor-555 phalloidin.



Immunohistochemical

Immunohistochemical analysis of paraffin-embedded human liver cancer (right) and colon cancer tissues (left) using KLHL11 mouse mAb with DAB staining.



Western blot

Western blot analysis using KLHL11 mouse mAb against Hela (1) and MCF-7 (2) cell lysate.