

Anti-TBLR1 Antibody (R4A80)

Summary

Catalog No.	RHN91501
Clone ID	R4A80
Host species	Mouse
Tested applications	ELISA: 1:10000, FCM: 1:200-1:400, IHC: 1:200-1:1000, WB: 1:500-1:2000
Species reactivity	Human, Mouse
Form	Liquid
Storage buffer	0.01M PBS, pH 7.4, 0.05% Sodium Azide.
Concentration	1 mg/ml
Purity	>95% as determined by SDS-PAGE.
Clonality	Monoclonal
Isotype	IgG1
Applications	ELISA, FCM, IHC, WB
Target	TBL1XR1, IRA1, F-box-like/WD repeat-containing protein TBL1XR1, TBLR1, Transducin beta-like 1X-related protein 1, TBL1-related protein 1, Nuclear receptor corepressor/HDAC3 complex subunit TBLR1
Purification	Protein A/G purified from cell culture supernatant.
Endotoxin level	Please contact with the lab for this information.
Accession	Q9BZK7

Stability and Storage

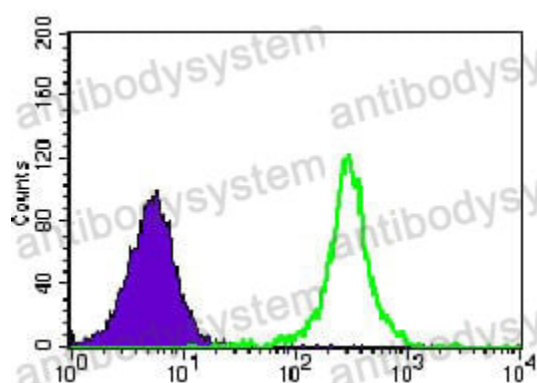
Use a manual defrost freezer and avoid repeated freeze-thaw cycles.

Store at 4°C short term (1-2 weeks). Store at -20°C 12 months. Store at -80°C long term.

Note

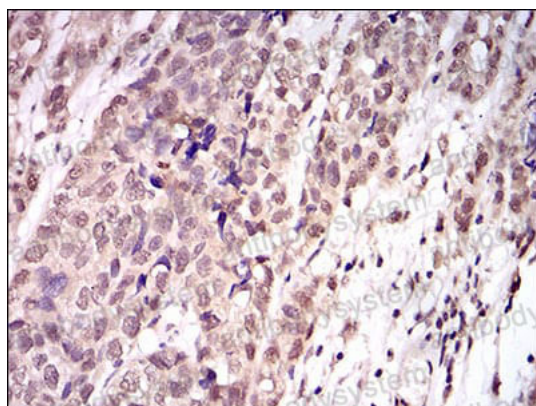
For research use only.

Data Image



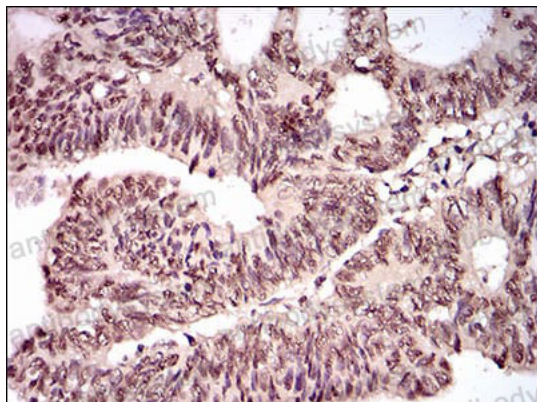
Flow Cytometry

Flow cytometric analysis of K562 cells using TBLR1 mouse mAb (green) and negative control (purple).



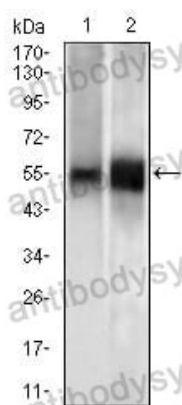
Immunohistochemical

Immunohistochemical analysis of paraffin-embedded human bladder cancer tissues using TBLR1 mouse mAb with DAB staining.



Immunohistochemical

Immunohistochemical analysis of paraffin-embedded human rectum cancer tissues using TBLR1 mouse mAb with DAB staining.



Western blot

Western blot analysis using TBLR1 mouse mAb against Mouse heart (1) tissue lysate and K562 (2) cell lysate.