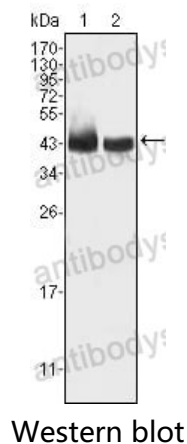


Anti-KLF15 Antibody (R4A77)

Summary

Catalog No.	RHN91201
Clone ID	R4A77
Host species	Mouse
Tested applications	WB: 1:500-1:2000
Species reactivity	Human
Form	Liquid
Storage buffer	0.01M PBS, pH 7.4, 0.05% Sodium Azide.
Concentration	1 mg/ml
Purity	>95% as determined by SDS-PAGE.
Clonality	Monoclonal
Isotype	IgG1
Applications	WB
Target	Kidney-enriched krueppel-like factor, Krueppel-like factor 15, KKLf, KLF15
Purification	Protein A/G purified from cell culture supernatant.
Endotoxin level	Please contact with the lab for this information.
Accession	Q9UIH9
Stability and Storage	Use a manual defrost freezer and avoid repeated freeze-thaw cycles. Store at 4°C short term (1-2 weeks). Store at -20°C 12 months. Store at -80°C long term.
Note	For research use only.

Data Image



Western blot analysis using KLF15 mouse mAb against HepG2 (1) and SMMC-7721 (2) cell lysate.