

Anti-MTDH Antibody (R4A59)

Summary

Catalog No.	RHN88903
Clone ID	R4A59
Host species	Mouse
Tested applications	ELISA: 1:10000, FCM: 1:200-1:400, IF: 1:50-1:200, IHC: 1:200-1:1000, WB: 1:500-1:2000
Species reactivity	Human, Monkey
Form	Liquid
Storage buffer	0.01M PBS, pH 7.4, 0.05% Sodium Azide.
Concentration	1 mg/ml
Purity	>95% as determined by SDS-PAGE.
Clonality	Monoclonal
Isotype	IgG1
Applications	ELISA, FCM, IF, IHC, WB
Target	3D3/LYRIC, AEG1, LYRIC, AEG-1, MTDH, Lysine-rich CEACAM1 co-isolated protein, Astrocyte elevated gene-1 protein, Protein LYRIC, Metadherin, Metastasis adhesion protein
Purification	Protein A/G purified from cell culture supernatant.
Endotoxin level	Please contact with the lab for this information.
Accession	Q86UE4

Stability and Storage

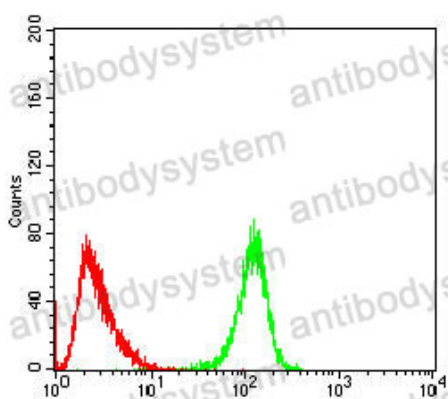
Use a manual defrost freezer and avoid repeated freeze-thaw cycles.

Store at 4°C short term (1-2 weeks). Store at -20°C 12 months. Store at -80°C long term.

Note

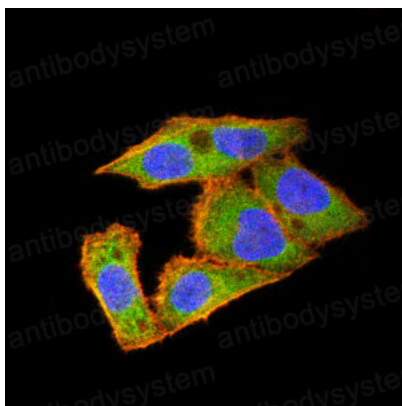
For research use only.

Data Image



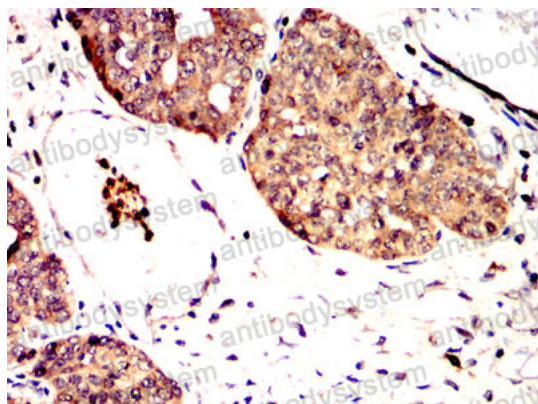
Flow Cytometry

Flow cytometric analysis of Hela cells using MTDH mouse mAb (green) and negative control (red).



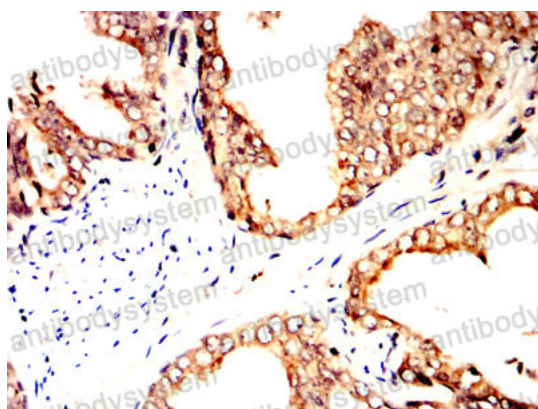
Immunofluorescence

Immunofluorescence analysis of Hela cells using MTDH mouse mAb (green). Blue: DRAQ5 fluorescent DNA dye. Red: Actin filaments have been labeled with Alexa Fluor- 555 phalloidin.



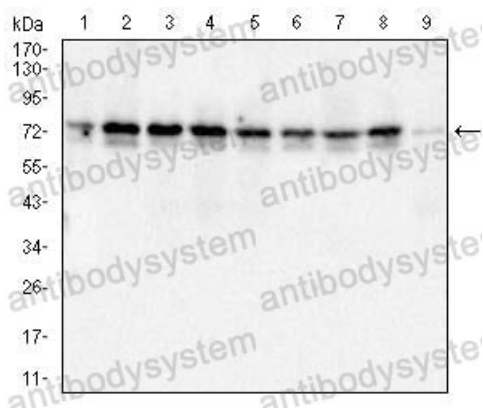
Immunohistochemical

Immunohistochemical analysis of paraffin-embedded human ovarian cancer tissues using MTDH mouse mAb with DAB staining.



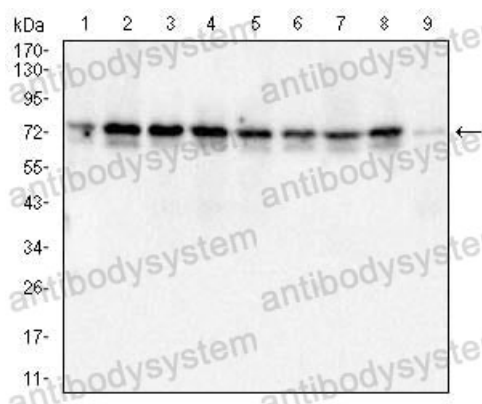
Immunohistochemical

Immunohistochemical analysis of paraffin-embedded human prostate cancer tissues using MTDH mouse mAb with DAB staining.



Western blot

Western blot analysis using MTDH mouse mAb against MCF-7 (1), T47D (2), Jurkat (3), K562 (4), HeLa (5), PC-3 (6), HepG2 (7), A431 (8) and COS7 (9) cell lysate.



Western blot

Western blot analysis using MTDH mouse mAb against MCF-7 (1), T47D (2), Jurkat (3), K562 (4), HeLa(5), PC-3(6), HepG2(7), A431(8) and COS7 (9) cell lysate.