

Anti-BCL11B Antibody (R4A42)

Summary

Catalog No.	RHN82802
Clone ID	R4A42
Host species	Mouse
Tested applications	ELISA: 1:10000, FCM: 1:200-1:400, IF: 1:50-1:250, IHC: 1:200-1:1000
Species reactivity	Human
Form	Liquid
Storage buffer	0.01M PBS, pH 7.4, 0.05% Sodium Azide.
Concentration	1 mg/ml
Purity	>95% as determined by SDS-PAGE.
Clonality	Monoclonal
Isotype	IgG1
Applications	ELISA, FCM, IF, IHC
Target	CTIP2, BCL-11B, COUP-TF-interacting protein 2, B-cell lymphoma/leukemia 11B, Radiation-induced tumor suppressor gene 1 protein, hRit1, BCL11B, RIT1, B-cell CLL/lymphoma 11B
Purification	Protein A/G purified from cell culture supernatant.
Endotoxin level	Please contact with the lab for this information.
Accession	Q9C0K0

Stability and Storage

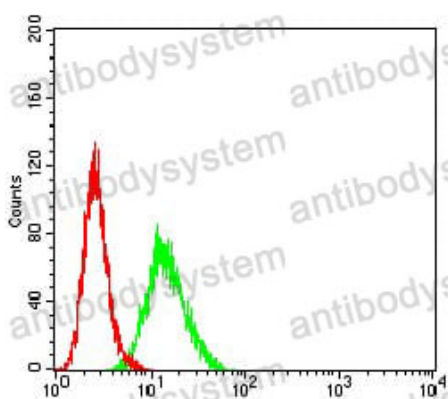
Use a manual defrost freezer and avoid repeated freeze-thaw cycles.

Store at 4°C short term (1-2 weeks). Store at -20°C 12 months. Store at -80°C long term.

Note

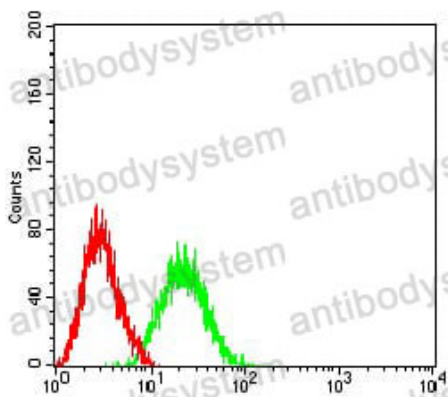
For research use only.

Data Image



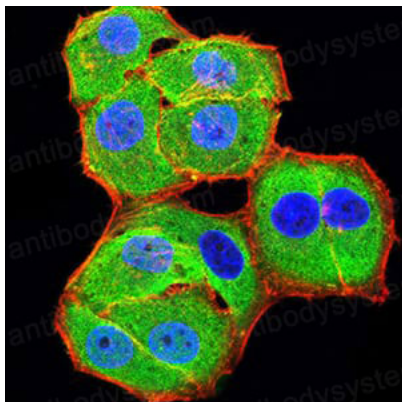
Flow Cytometry

Flow cytometric analysis of HeLa cells using BCL11B mouse mAb (green) and negative control (red).



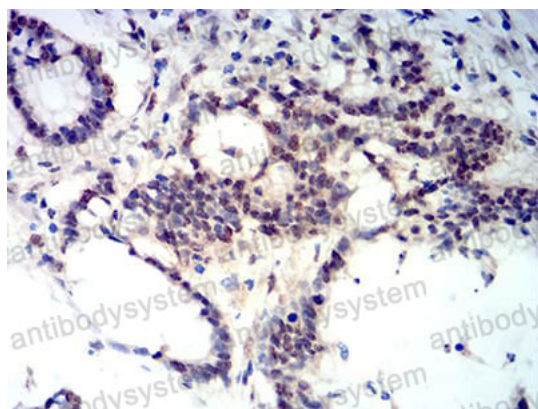
Flow Cytometry

Flow cytometric analysis of Jurkat cells using BCL11B mouse mAb (green) and negative control (red).



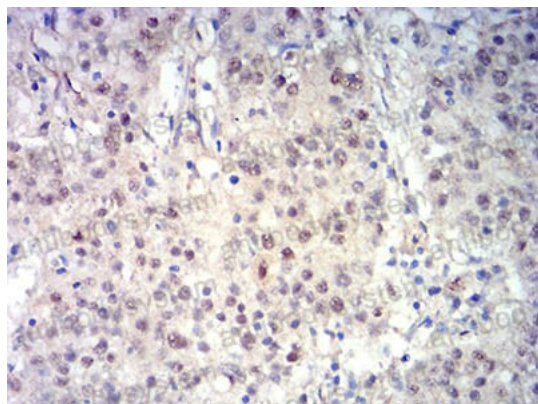
Immunofluorescence

Immunofluorescence analysis of HeLa cells using BCL11B mouse mAb (green). Blue: DRAQ5 fluorescent DNA dye. Red: Actin filaments have been labeled with Alexa Fluor- 555 phalloidin.



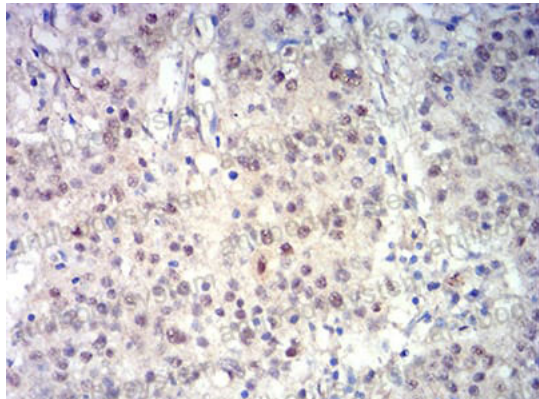
Immunohistochemical

Immunohistochemical analysis of paraffin-embedded human colon cancer tissues using BCL11B mouse mAb with DAB staining.



Immunohistochemical

Immunohistochemical analysis of paraffin-embedded human stomach cancer tissues using BCL11B mouse mAb with DAB staining.



Immunohistochemical

Immunohistochemical analysis of paraffin-embedded human stomach cancer tissues using BCL11B mouse mAb with DAB staining.