

Anti-ATG4C Antibody (R4A38)

Summary

Catalog No.	RHN82002
Clone ID	R4A38
Host species	Mouse
Tested applications	ELISA: 1:10000, WB: 1:500-1:2000
Species reactivity	Human
Form	Liquid
Storage buffer	0.01M PBS, pH 7.4, 0.05% Sodium Azide.
Concentration	1 mg/ml
Purity	>95% as determined by SDS-PAGE.
Clonality	Monoclonal
Isotype	IgG1
Applications	ELISA, WB
Target	Autophagy-related protein 4 homolog C, AUTL1, AUTL3, APG4C, AUT-like 3 cysteine endopeptidase, Autophagin-3, ATG4C, Autophagy-related cysteine endopeptidase 3, Cysteine protease ATG4C
Purification	Protein A/G purified from cell culture supernatant.
Endotoxin level	Please contact with the lab for this information.
Accession	Q96DT6

Stability and Storage

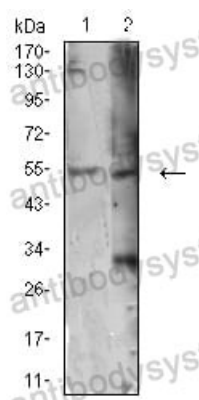
Use a manual defrost freezer and avoid repeated freeze-thaw cycles.

Store at 4°C short term (1-2 weeks). Store at -20°C 12 months. Store at -80°C long term.

Note

For research use only.

Data Image



Western blot

Western blot analysis using ATG4C mouse mAb against HEK293 (1) and MOLT4 (2) cell lysate.