

# Anti-ASPSCR1/TUG Antibody (R4A32)

## Summary

---

<b>Catalog No.</b>	RMN76801
<b>Clone ID</b>	R4A32
<b>Host species</b>	Mouse
<b>Tested applications</b>	WB: 1:500-1:2000
<b>Species reactivity</b>	Mouse
<b>Form</b>	Liquid
<b>Storage buffer</b>	0.01M PBS, pH 7.4, 0.05% Sodium Azide.
<b>Concentration</b>	1 mg/ml
<b>Purity</b>	>95% as determined by SDS-PAGE.
<b>Clonality</b>	Monoclonal
<b>Isotype</b>	IgG1
<b>Applications</b>	WB
<b>Target</b>	Alveolar soft part sarcoma locus, Alveolar soft part sarcoma chromosomal region candidate gene 1 protein, TUG, UBX domain-containing protein 9, ASPL, ASPSCR1, RCC17, UBXN9, Renal papillary cell carcinoma protein 17, UBXD9, Tether containing UBX domain for GLUT4
<b>Purification</b>	Protein A/G purified from cell culture supernatant.
<b>Endotoxin level</b>	Please contact with the lab for this information.
<b>Accession</b>	Q9BZE9

**Stability and Storage**

Use a manual defrost freezer and avoid repeated freeze-thaw cycles.

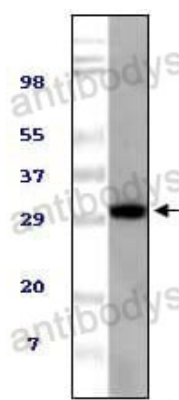
Store at 4°C short term (1-2 weeks). Store at -20°C 12 months. Store at -80°C long term.

**Note**

For research use only.

## Data Image

---



Western blot

Western blot analysis using TUG mouse mAb against NIH/3T3 cell lysate.