

Anti-PAG1 Antibody (R4A28)

Summary

Catalog No.	RHN72902
Clone ID	R4A28
Host species	Mouse
Tested applications	IHC: 1:100-1:200
Species reactivity	Human
Form	Liquid
Storage buffer	0.01M PBS, pH 7.4, 0.05% Sodium Azide.
Concentration	1 mg/ml
Purity	>95% as determined by SDS-PAGE.
Clonality	Monoclonal
Isotype	IgG2a
Applications	IHC
Target	CBP, Phosphoprotein associated with glycosphingolipid-enriched microdomains 1, Csk-binding protein, PAG, PAG1, Transmembrane adapter protein PAG, Transmembrane phosphoprotein Cbp
Purification	Protein A/G purified from cell culture supernatant.
Endotoxin level	Please contact with the lab for this information.
Accession	Q9NWQ8

Stability and Storage

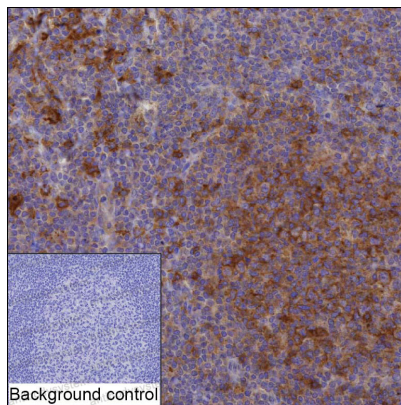
Use a manual defrost freezer and avoid repeated freeze-thaw cycles.

Store at 4°C short term (1-2 weeks). Store at -20°C 12 months. Store at -80°C long term.

Note

For research use only.

Data Image



Immunohistochemical

IHC-P analysis of tonsil tissue by PAG1 antibody (RHN72902). IHC-P was performed using sections of the formalin-fixed paraffin-embedded tonsil tissue; Result: Germinal center and non-germinal center cells are positively stained at the cell membrane.