

Anti-WIF1 Antibody (R4A23)

Summary

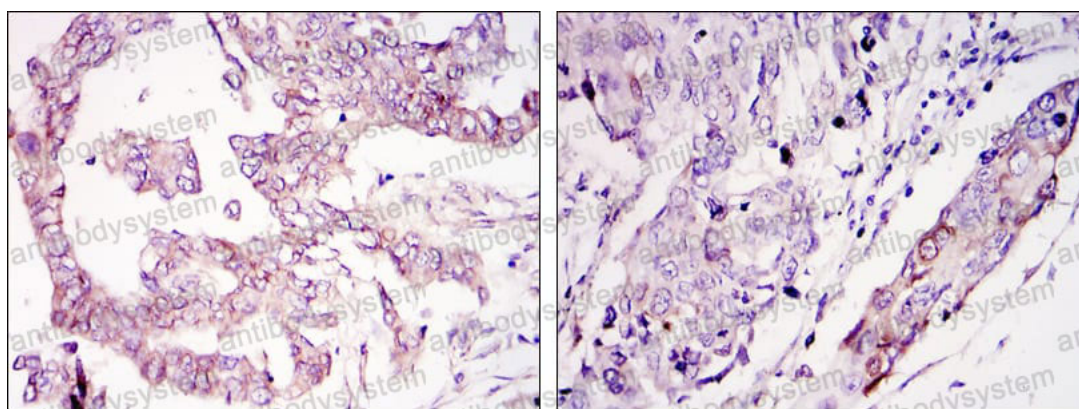
Catalog No.	RHN58202
Clone ID	R4A23
Host species	Mouse
Tested applications	IF: 1:200-1:1000, IHC: 1:200-1:1000, WB: 1:500-1:2000
Species reactivity	Human
Form	Liquid
Storage buffer	0.01M PBS, pH 7.4, 0.05% Sodium Azide.
Concentration	1 mg/ml
Purity	>95% as determined by SDS-PAGE.
Clonality	Monoclonal
Isotype	IgG1
Applications	IF, IHC, WB
Target	WIF1, WIF-1, Wnt inhibitory factor 1
Purification	Protein A/G purified from cell culture supernatant.
Endotoxin level	Please contact with the lab for this information.
Accession	Q9Y5W5
Stability and Storage	Use a manual defrost freezer and avoid repeated freeze-thaw cycles. Store at 4°C short term (1-2 weeks). Store at -20°C 12 months. Store at -80°C long term.
Note	For research use only.

Data Image



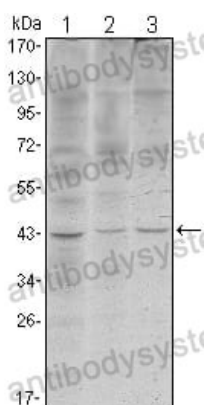
Immunofluorescence

Immunofluorescence analysis of Hela cells using WIF1 mouse mAb (green). Red: Actin filaments have been labeled with Alexa Fluor-555 phalloidin.



Immunohistochemical

Immunohistochemical analysis of paraffin-embedded human ovary tumour tissues (left) and lung cancer (right) using WIF1 mouse mAb with DAB staining.



Western blot

Western blot analysis using WIF1 mouse mAb against Hela (1), NIH/3T3 (2) and NTERA-2 (3) cell lysate.