

# Anti-JCHAIN Antibody (R4A19)

## Summary

---

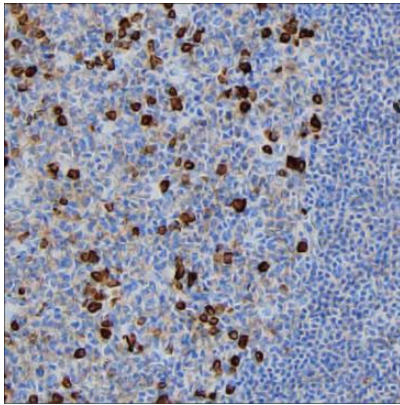
<b>Catalog No.</b>	RHN54501
<b>Clone ID</b>	R4A19
<b>Host species</b>	Mouse
<b>Tested applications</b>	IHC: 1:500, WB: 1:200
<b>Species reactivity</b>	Human
<b>Form</b>	Liquid
<b>Storage buffer</b>	0.01M PBS, pH 7.4, 0.05% Sodium Azide.
<b>Concentration</b>	1 mg/ml
<b>Purity</b>	>95% as determined by SDS-PAGE.
<b>Clonality</b>	Monoclonal
<b>Isotype</b>	IgG2b
<b>Applications</b>	IHC, WB
<b>Target</b>	IGCJ, Immunoglobulin J chain, IGJ, JCHAIN, Joining chain of multimeric IgA and IgM
<b>Purification</b>	Protein A/G purified from cell culture supernatant.
<b>Endotoxin level</b>	Please contact with the lab for this information.
<b>Accession</b>	P01591
<b>Stability and Storage</b>	Use a manual defrost freezer and avoid repeated freeze-thaw cycles. Store at 4°C short term (1-2 weeks). Store at -20°C 12 months. Store at -80°C long term.

**Note**

For research use only.

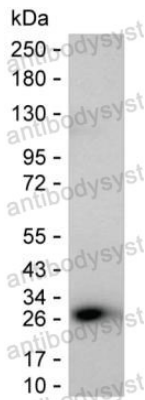
## Data Image

---



Immunohistochemical

IHC-P analysis of tonsil tissue by JCHAIN antibody (RHN54501). IHC-P was performed using sections of the formalin-fixed paraffin-embedded tonsil tissue; Result: Germinal center cells, non-germinal center cells and squamous epithelial cells are positively stained at the cytoplasm (Only positively stained Germinal center cells are shown here).



Western blot

Western blot analysis using human JCHAIN mouse mAb against human plasma lysate