

Anti-CHCHD6 Antibody (R4A16)

Summary

Catalog No.	RHN48901
Clone ID	R4A16
Host species	Mouse
Tested applications	IHC: 1:100-1:200, IP: 1:100-1:200
Species reactivity	Human
Form	Liquid
Storage buffer	0.01M PBS, pH 7.4, 0.05% Sodium Azide.
Concentration	1 mg/ml
Purity	>95% as determined by SDS-PAGE.
Clonality	Monoclonal
Isotype	IgG2a
Applications	IHC, IP
Target	CHCHD6, MIC25, Coiled-coil-helix cristae morphology protein 1, Coiled-coil-helix-coiled-coil-helix domain-containing protein 6, CHCM1, MICOS complex subunit MIC25
Purification	Protein A/G purified from cell culture supernatant.
Endotoxin level	Please contact with the lab for this information.
Accession	Q9BRQ6

Stability and Storage

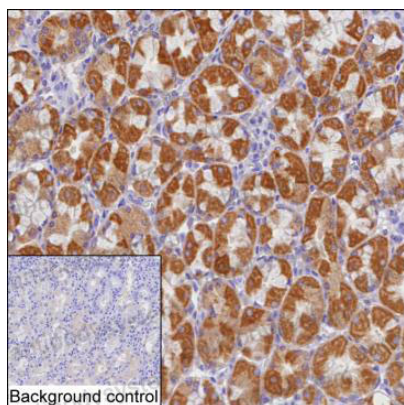
Use a manual defrost freezer and avoid repeated freeze-thaw cycles.

Store at 4°C short term (1-2 weeks). Store at -20°C 12 months. Store at -80°C long term.

Note

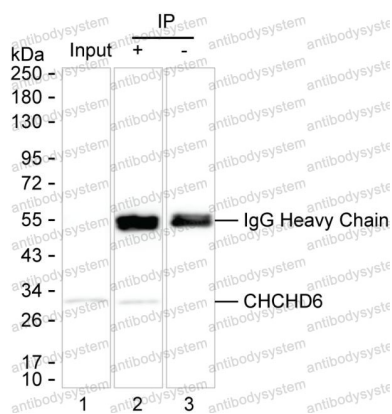
For research use only.

Data Image



Immunohistochemical

IHC-P analysis of stomach tissue by CHCHD6 antibody (RHN48901). IHC-P was performed using sections of the formalin-fixed paraffin-embedded stomach tissue; Result: Glandular cells are positively stained at the cytoplasm.



Immunoprecipitation

Lane 1: Jurkat lysate ; Lane 2: CHCHD6 immunoprecipitated from Jurkat lysate by RHN48901; Lane 3: The same as Lane 2 but use IgG isotype control antibody ; Result: RHN48901 can immunoprecipitate CHCHD6;