

# Anti-WWP1 Antibody (R4A15)

## Summary

---

<b>Catalog No.</b>	RHN48802
<b>Clone ID</b>	R4A15
<b>Host species</b>	Mouse
<b>Tested applications</b>	IP: 1:100-1:200
<b>Species reactivity</b>	Human
<b>Form</b>	Liquid
<b>Storage buffer</b>	0.01M PBS, pH 7.4, 0.05% Sodium Azide.
<b>Concentration</b>	1 mg/ml
<b>Purity</b>	>95% as determined by SDS-PAGE.
<b>Clonality</b>	Monoclonal
<b>Isotype</b>	IgG2a
<b>Applications</b>	IP
<b>Target</b>	WWP1, TGIF-interacting ubiquitin ligase 1, AIP5, WW domain-containing protein 1, Tiul1, HECT-type E3 ubiquitin transferase WWP1, NEDD4-like E3 ubiquitin-protein ligase WWP1, Atrophin-1-interacting protein 5
<b>Purification</b>	Protein A/G purified from cell culture supernatant.
<b>Endotoxin level</b>	Please contact with the lab for this information.
<b>Accession</b>	Q9H0M0

## Stability and Storage

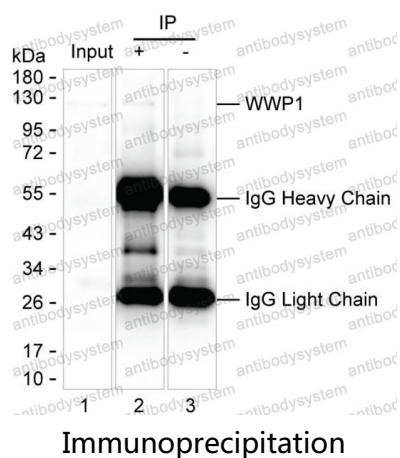
Use a manual defrost freezer and avoid repeated freeze-thaw cycles.

Store at 4°C short term (1-2 weeks). Store at -20°C 12 months. Store at -80°C long term.

## Note

For research use only.

## Data Image



Lane 1: HeLa lysate; Lane 2: WWP1 immunoprecipitated from HeLa lysate by RHN48802; Lane 3: The same as Lane 2 but use IgG isotype control antibody ;Result: RHN48802 can immunoprecipitate WWP1;