

# Anti-WWP1 Antibody (R4A14)

## Summary

---

<b>Catalog No.</b>	RHN48801
<b>Clone ID</b>	R4A14
<b>Host species</b>	Mouse
<b>Tested applications</b>	WB: 1:500-1:1000
<b>Species reactivity</b>	Human
<b>Form</b>	Liquid
<b>Storage buffer</b>	0.01M PBS, pH 7.4, 0.05% Sodium Azide.
<b>Concentration</b>	1 mg/ml
<b>Purity</b>	>95% as determined by SDS-PAGE.
<b>Clonality</b>	Monoclonal
<b>Isotype</b>	IgG1
<b>Applications</b>	WB
<b>Target</b>	WWP1, TGIF-interacting ubiquitin ligase 1, AIP5, WW domain-containing protein 1, Tiul1, HECT-type E3 ubiquitin transferase WWP1, NEDD4-like E3 ubiquitin-protein ligase WWP1, Atrophin-1-interacting protein 5
<b>Purification</b>	Protein A/G purified from cell culture supernatant.
<b>Endotoxin level</b>	Please contact with the lab for this information.
<b>Accession</b>	Q9H0M0

**Stability and Storage**

Use a manual defrost freezer and avoid repeated freeze-thaw cycles.

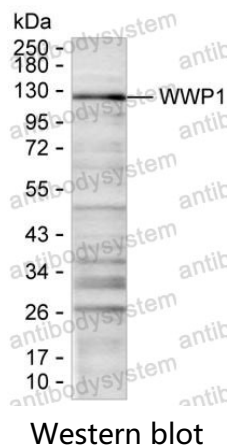
Store at 4°C short term (1-2 weeks). Store at -20°C 12 months. Store at -80°C long term.

**Note**

For research use only.

**Data Image**

---



Western blot analysis using WWP1 mouse mAb against HeLa lysate