

Anti-ASPM Antibody (R4A12)

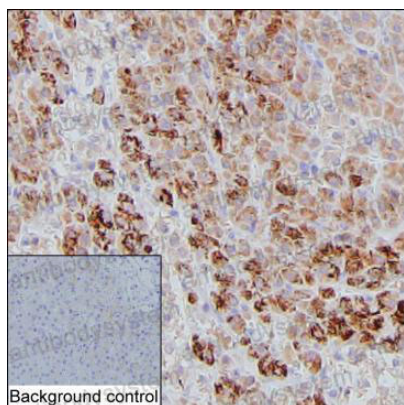
Summary

Catalog No.	RHN42901
Clone ID	R4A12
Host species	Mouse
Tested applications	IHC: 1:50-1:250, WB: 1:500-1:1000
Species reactivity	Human
Form	Liquid
Storage buffer	0.01M PBS, pH 7.4, 0.05% Sodium Azide.
Concentration	1 mg/ml
Purity	>95% as determined by SDS-PAGE.
Clonality	Monoclonal
Isotype	IgG2b
Applications	IHC, WB
Target	MCPH5, Abnormal spindle-like microcephaly-associated protein, ASPM, Abnormal spindle protein homolog, Asp homolog
Purification	Protein A/G purified from cell culture supernatant.
Endotoxin level	Please contact with the lab for this information.
Accession	Q8IZT6
Stability and Storage	Use a manual defrost freezer and avoid repeated freeze-thaw cycles. Store at 4°C short term (1-2 weeks). Store at -20°C 12 months. Store at -80°C long term.

Note

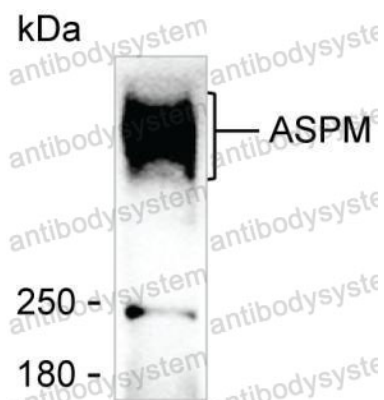
For research use only.

Data Image



Immunohistochemical

IHC-P analysis of adrenal gland tissue by ASPM antibody (RHN42901). IHC-P was performed using sections of the formalin-fixed paraffin-embedded adrenal gland tissue; Result: Glandular cells are positively stained at the cytoplasm.



Western blot

Western blot analysis using ASPM mouse mAb against HEK-293 lysate