

# Anti-SH3GL1 Antibody (R3Z93)

## Summary

---

<b>Catalog No.</b>	RHN16503
<b>Clone ID</b>	R3Z93
<b>Host species</b>	Mouse
<b>Tested applications</b>	ELISA: 1:10000, FCM: 1:200-1:400
<b>Species reactivity</b>	Human
<b>Form</b>	Liquid
<b>Storage buffer</b>	0.01M PBS, pH 7.4, 0.05% Sodium Azide.
<b>Concentration</b>	1 mg/ml
<b>Purity</b>	>95% as determined by SDS-PAGE.
<b>Clonality</b>	Monoclonal
<b>Isotype</b>	IgG1
<b>Applications</b>	ELISA, FCM
<b>Target</b>	SH3GL1, Endophilin-2, EEN fusion partner of MLL, Extra eleven-nineteen leukemia fusion gene protein, EEN, SH3 domain protein 2B, SH3 domain-containing GRB2-like protein 1, Endophilin-A2, SH3D2B, CNSA1
<b>Purification</b>	Protein A/G purified from cell culture supernatant.
<b>Endotoxin level</b>	Please contact with the lab for this information.
<b>Accession</b>	Q99961

**Stability and Storage**

Use a manual defrost freezer and avoid repeated freeze-thaw cycles.

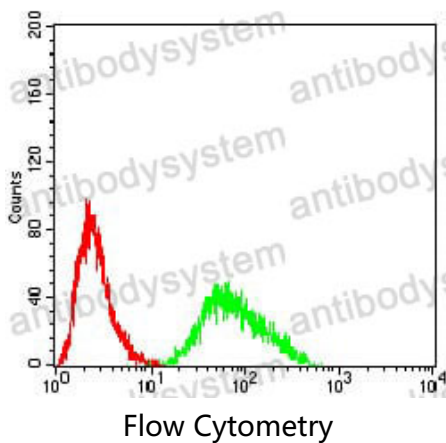
Store at 4°C short term (1-2 weeks). Store at -20°C 12 months. Store at -80°C long term.

**Note**

For research use only.

## Data Image

---



Flow cytometric analysis of Hela cells using SH3GL1 mouse mAb (green) and negative control (red).