

Anti-MR1 Antibody (R3Z92)

Summary

Catalog No.	RHN14704
Clone ID	R3Z92
Host species	Mouse
Tested applications	ELISA: 1:10000, FCM: 1:200-1:400, IF: 1:200-1:1000, IHC: 1:200-1:1000
Species reactivity	Human
Form	Liquid
Storage buffer	0.01M PBS, pH 7.4, 0.05% Sodium Azide.
Concentration	1 mg/ml
Purity	>95% as determined by SDS-PAGE.
Clonality	Monoclonal
Isotype	IgG2a
Applications	ELISA, FCM, IF, IHC
Target	Class I histocompatibility antigen-like protein, MR1, MHC class I-related gene protein, Major histocompatibility complex class I-related gene protein
Purification	Protein A/G purified from cell culture supernatant.
Endotoxin level	Please contact with the lab for this information.
Accession	Q95460

Stability and Storage

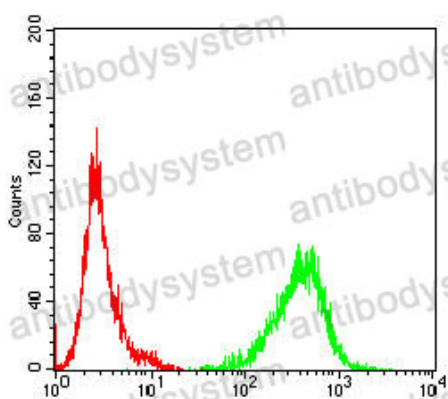
Use a manual defrost freezer and avoid repeated freeze-thaw cycles.

Store at 4°C short term (1-2 weeks). Store at -20°C 12 months. Store at -80°C long term.

Note

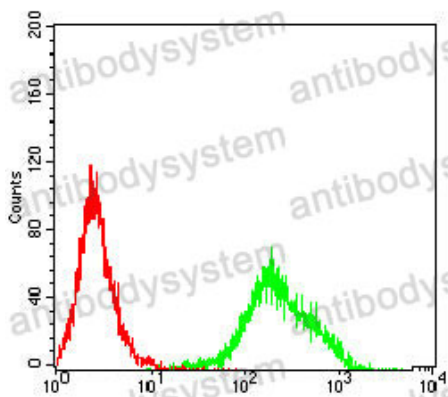
For research use only.

Data Image



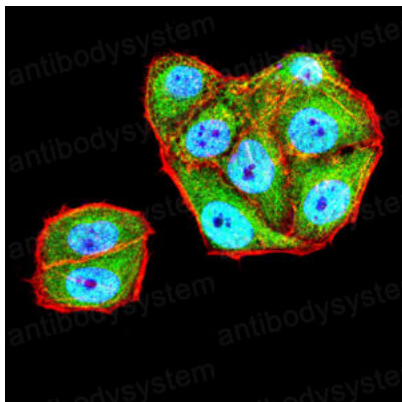
Flow Cytometry

Flow cytometric analysis of Jurkat cells using MR1 mouse mAb (green) and negative control (red).



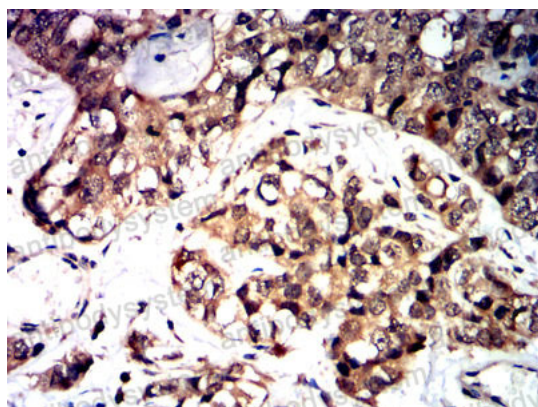
Flow Cytometry

Flow cytometric analysis of THP-1 cells using MR1 mouse mAb (green) and negative control (red).



Immunofluorescence

Immunofluorescence analysis of HeLa cells using MR1 mouse mAb (green). Blue: DRAQ5 fluorescent DNA dye. Red: Actin filaments have been labeled with Alexa Fluor- 555 phalloidin.



Immunohistochemical

Immunohistochemical analysis of paraffin-embedded human bladder cancer tissues using MR1 mouse mAb with DAB staining.