

# Anti-PLAGL1 Antibody (R3Z90)

## Summary

---

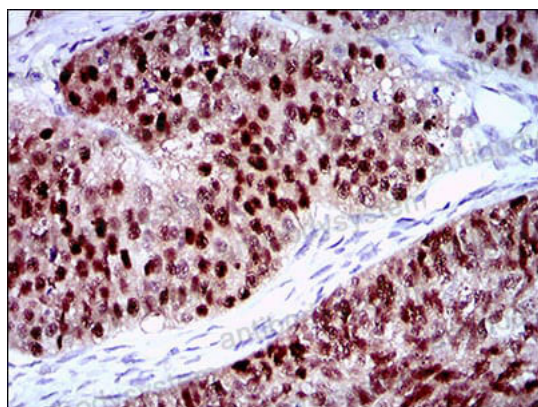
<b>Catalog No.</b>	RHN08502
<b>Clone ID</b>	R3Z90
<b>Host species</b>	Mouse
<b>Tested applications</b>	ELISA: 1:10000, IHC: 1:200-1:1000
<b>Species reactivity</b>	Human
<b>Form</b>	Liquid
<b>Storage buffer</b>	0.01M PBS, pH 7.4, 0.05% Sodium Azide.
<b>Concentration</b>	1 mg/ml
<b>Purity</b>	>95% as determined by SDS-PAGE.
<b>Clonality</b>	Monoclonal
<b>Isotype</b>	IgG1
<b>Applications</b>	ELISA, IHC
<b>Target</b>	ZAC, LOT-1, Lost on transformation 1, Pleiomorphic adenoma-like protein 1, PLAGL1, Zinc finger protein PLAGL1, LOT1, Tumor suppressor ZAC
<b>Purification</b>	Protein A/G purified from cell culture supernatant.
<b>Endotoxin level</b>	Please contact with the lab for this information.
<b>Accession</b>	Q9UM63
<b>Stability and Storage</b>	Use a manual defrost freezer and avoid repeated freeze-thaw cycles. Store at 4°C short term (1-2 weeks). Store at -20°C 12 months. Store at -80°C long term.

Note

For research use only.

## Data Image

---



Immunohistochemical

Immunohistochemical analysis of paraffin-embedded human ovarian cancer tissues using PLAGL1 mouse mAb with DAB staining.