

Anti-DCBLD2/CLCP1 Antibody (R3Z87)

Summary

| | |
|----------------------------|--|
| Catalog No. | RHN05402 |
| Clone ID | R3Z87 |
| Host species | Mouse |
| Tested applications | IP: 1:100-1:200, WB: 1:500-1:1000 |
| Species reactivity | Human |
| Form | Liquid |
| Storage buffer | 0.01M PBS, pH 7.4, 0.05% Sodium Azide. |
| Concentration | 1 mg/ml |
| Purity | >95% as determined by SDS-PAGE. |
| Clonality | Monoclonal |
| Isotype | IgG1 |
| Applications | IP, WB |
| Target | Discoidin, CUB and LCCL domain-containing protein 2, ESDN, DCBLD2, CLCP1, CUB, LCCL and coagulation factor V/VIII-homology domains protein 1, Endothelial and smooth muscle cell-derived neuropilin-like protein |
| Purification | Protein A/G purified from cell culture supernatant. |
| Endotoxin level | Please contact with the lab for this information. |
| Accession | Q96PD2 |

Stability and Storage

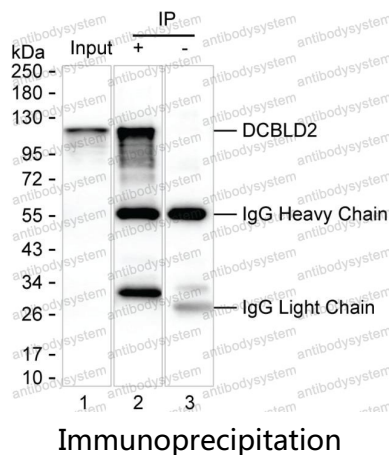
Use a manual defrost freezer and avoid repeated freeze-thaw cycles.

Store at 4°C short term (1-2 weeks). Store at -20°C 12 months. Store at -80°C long term.

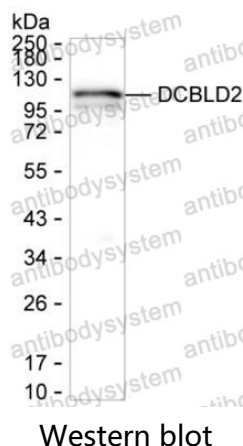
Note

For research use only.

Data Image



Lane 1: PC-3 lysate ; Lane 2: DCBLD2 immunoprecipitated from PC-3 lysate by RHN05402; Lane 3: The same as Lane 2 but use IgG isotype control antibody ;Result: RHN05402 can immunoprecipitate DCBLD2;



Western blot analysis using DCBLD2 mouse mAb against PC-3 lysate