

Anti-C9orf72 Antibody (R3Z85)

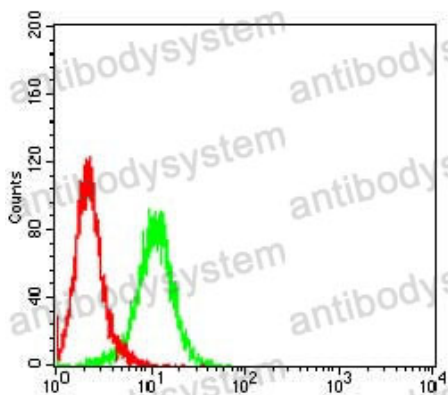
Summary

Catalog No.	RHN05103
Clone ID	R3Z85
Host species	Mouse
Tested applications	ELISA: 1:10000, FCM: 1:200-1:400, IF: 1:200-1:1000, IHC: 1:200-1:1000, WB: 1:500-1:2000
Species reactivity	Human, Mouse, Rat, Monkey
Form	Liquid
Storage buffer	0.01M PBS, pH 7.4, 0.05% Sodium Azide.
Concentration	1 mg/ml
Purity	>95% as determined by SDS-PAGE.
Clonality	Monoclonal
Isotype	IgG2b
Applications	ELISA, FCM, IF, IHC, WB
Target	Guanine nucleotide exchange C9orf72, C9orf72
Purification	Protein A/G purified from cell culture supernatant.
Endotoxin level	Please contact with the lab for this information.
Accession	Q96LT7
Stability and Storage	Use a manual defrost freezer and avoid repeated freeze-thaw cycles. Store at 4°C short term (1-2 weeks). Store at -20°C 12 months. Store at -80°C long term.

Note

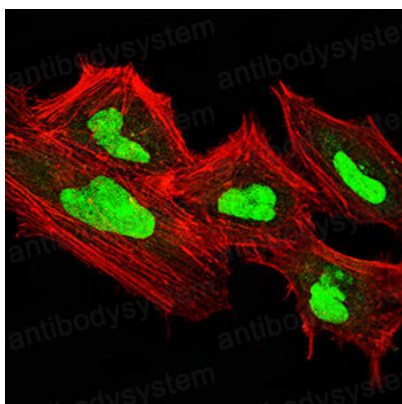
For research use only.

Data Image



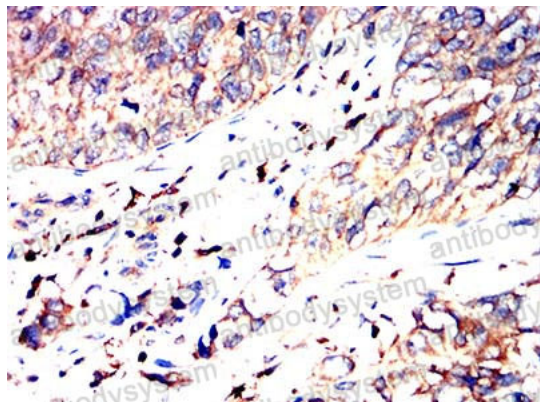
Flow Cytometry

Flow cytometric analysis of Hela cells using C9orf72 mouse mAb (green) and negative control (red).



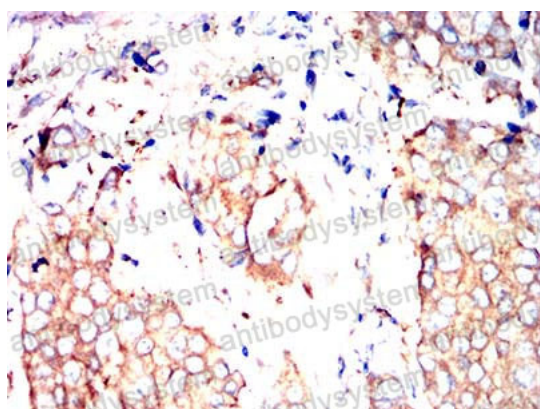
Immunofluorescence

Immunofluorescence analysis of Hela cells using C9orf72 mouse mAb (green). Blue: DRAQ5 fluorescent DNA dye. Red: Actin filaments have been labeled with Alexa Fluor- 555 phalloidin.



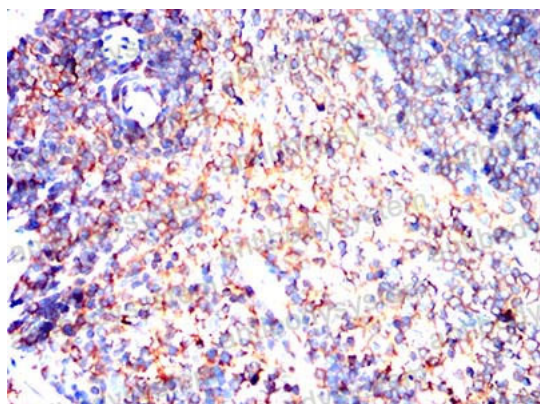
Immunohistochemical

Immunohistochemical analysis of paraffin-embedded human bladder cancer tissues using C9orf72 mouse mAb with DAB staining.



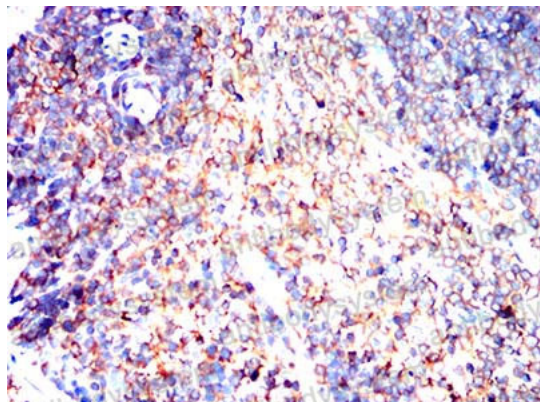
Immunohistochemical

Immunohistochemical analysis of paraffin-embedded human breast cancer tissues using C9orf72 mouse mAb with DAB staining.



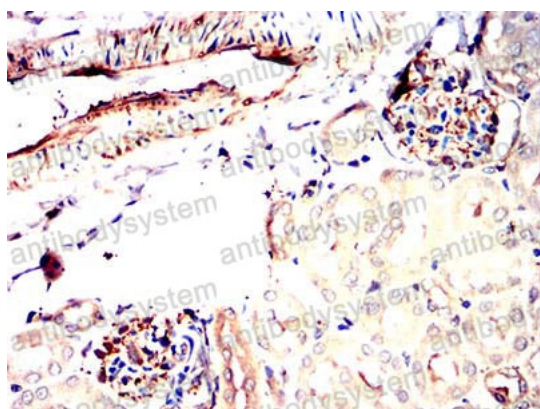
Immunohistochemical

Immunohistochemical analysis of paraffin-embedded mouse spleen tissues using C9orf72 mouse mAb with DAB staining.



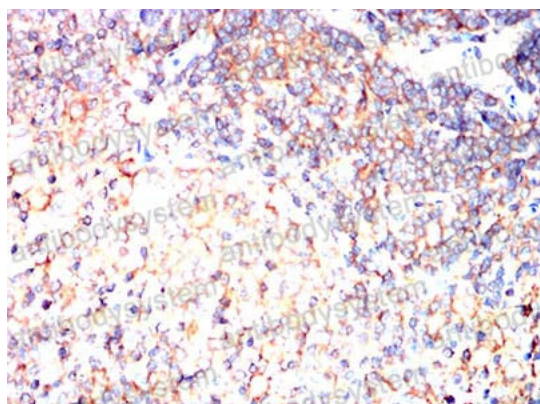
Immunohistochemical

Immunohistochemical analysis of paraffin-embedded mouse spleen tissues using C9orf72 mouse mAb with DAB staining.



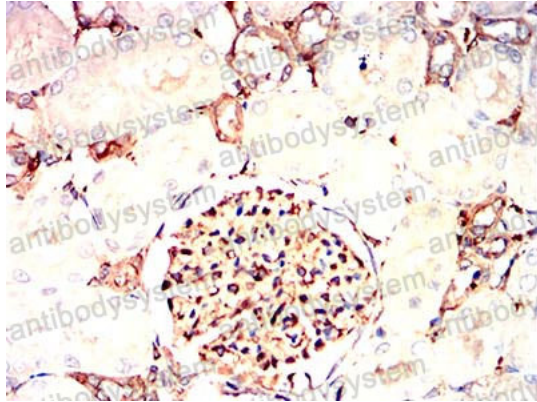
Immunohistochemical

Immunohistochemical analysis of paraffin-embedded mouse kidney tissues using C9orf72 mouse mAb with DAB staining.



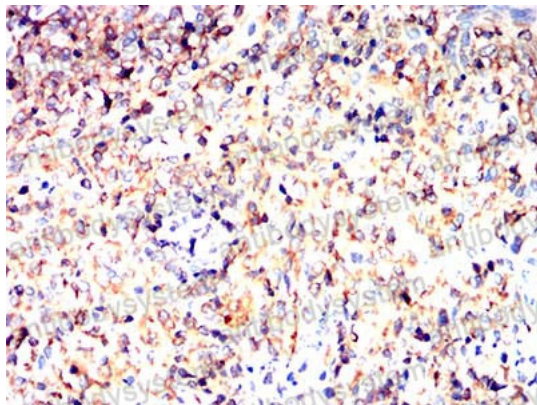
Immunohistochemical

Immunohistochemical analysis of paraffin-embedded rat spleen tissues using C9orf72 mouse mAb with DAB staining.



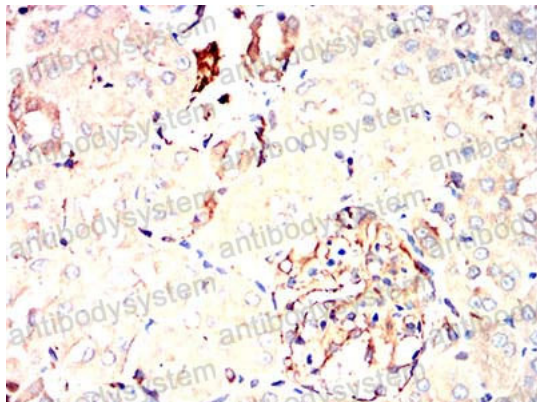
Immunohistochemical

Immunohistochemical analysis of paraffin-embedded rat kidney tissues using C9orf72 mouse mAb with DAB staining.



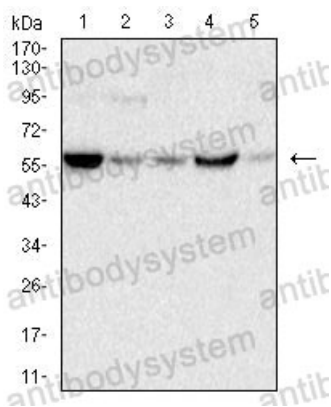
Immunohistochemical

Immunohistochemical analysis of paraffin-embedded rabbit spleen tissues using C9orf72 mouse mAb with DAB staining.



Immunohistochemical

Immunohistochemical analysis of paraffin-embedded rabbit kidney tissues using C9orf72 mouse mAb with DAB staining.



Western blot

Western blot analysis using C9orf72 mouse mAb against C6 (1), PC-12 (2), COS-7 (3), NIH/3T3 (4) and SK-N-SH (5) cell lysate.