

Anti-CLEC1A Antibody (R3Z84)

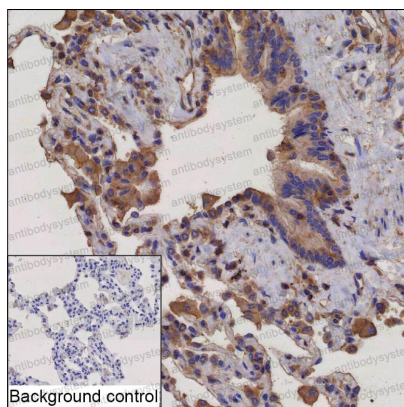
Summary

Catalog No.	RHN03402
Clone ID	R3Z84
Host species	Mouse
Tested applications	IHC: 1:25-1:200
Species reactivity	Human
Form	Liquid
Storage buffer	0.01M PBS, pH 7.4, 0.05% Sodium Azide.
Concentration	1 mg/ml
Purity	>95% as determined by SDS-PAGE.
Clonality	Monoclonal
Isotype	IgG2a
Applications	IHC
Target	CLEC1, CLEC1A, C-type lectin domain family 1 member A, C-type lectin-like receptor 1, CLEC-1
Purification	Protein A/G purified from cell culture supernatant.
Endotoxin level	Please contact with the lab for this information.
Accession	Q8NC01
Stability and Storage	Use a manual defrost freezer and avoid repeated freeze-thaw cycles. Store at 4°C short term (1-2 weeks). Store at -20°C 12 months. Store at -80°C long term.

Note

For research use only.

Data Image



Immunohistochemical

IHC-P analysis of lung tissue by CLEC1A antibody (RHN03402). IHC-P was performed using sections of the formalin-fixed paraffin-embedded lung tissue; Result: Macrophages and vascular endothelial cells are positively stained at the cytoplasm and cell membrane.