

Anti-HLA-DRA Antibody (R3Z75)

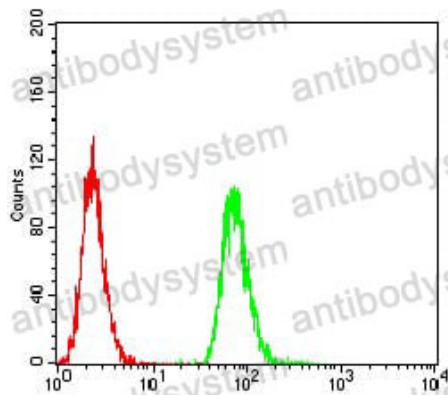
Summary

Catalog No.	RHM00801
Clone ID	R3Z75
Host species	Mouse
Tested applications	ELISA: 1:10000, FCM: 1:200-1:400, IF: 1:100-1:500, WB: 1:500-1:2000
Species reactivity	Human
Form	Liquid
Storage buffer	0.01M PBS, pH 7.4, 0.05% Sodium Azide.
Concentration	1 mg/ml
Purity	>95% as determined by SDS-PAGE.
Clonality	Monoclonal
Isotype	IgG2b
Applications	ELISA, FCM, IF, WB
Target	HLA-DRA1, MHC class II antigen DRA, HLA-DRA, HLA class II histocompatibility antigen, DR alpha chain
Purification	Protein A/G purified from cell culture supernatant.
Endotoxin level	Please contact with the lab for this information.
Accession	P01903
Stability and Storage	Use a manual defrost freezer and avoid repeated freeze-thaw cycles. Store at 4°C short term (1-2 weeks). Store at -20°C 12 months. Store at -80°C long term.

Note

For research use only.

Data Image



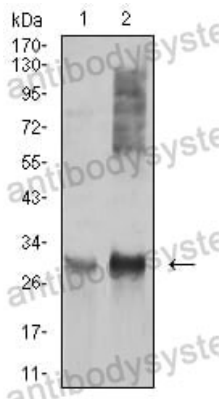
Flow Cytometry

Flow cytometric analysis of MCF-7 cells using HLA-DRA mouse mAb (green) and negative control (red).



Immunofluorescence

Immunofluorescence analysis of Hela cells using HLA-DRA mouse mAb (green). Blue: DRAQ5 fluorescent DNA dye. Red: Actin filaments have been labeled with Alexa Fluor-555 phalloidin.



Western blot

Western blot analysis using HLA-DRA mouse mAb against Ramos (1), and Raji (2) cell lysate.