

# Research Grade Solitomab

## Summary

---

<b>Catalog No.</b>	DHD17407
<b>Alternative Names</b>	MT110, AMG 110, AMG-110, AMG110, CAS: 1005198-65-1
<b>Clone ID</b>	Solitomab
<b>Host species</b>	Mouse
<b>Species reactivity</b>	Human
<b>Form</b>	Liquid
<b>Storage buffer</b>	0.01M PBS, pH 7.4.
<b>Concentration</b>	1.16 mg/ml
<b>Purity</b>	>95% as determined by SDS-PAGE.
<b>Clonality</b>	Monoclonal
<b>Isotype</b>	(scFv-kappa-heavy)-(scFv-heavy-kappa)
<b>Applications</b>	Research Grade Biosimilar
<b>Target</b>	Epithelial glycoprotein 314, hEGP314, Major gastrointestinal tumor-associated protein GA733-2, EGP314, TACSTD1, Adenocarcinoma-associated antigen, TROP1, EPCAM, Epithelial glycoprotein, KS 1/4 antigen, Tumor-associated calcium signal transducer 1, M4S1, CD326, Ep-CAM, EGP, Epithelial cell adhesion molecule, M1S2, KSA, Cell surface glycoprotein Trop-1, GA733-2, Epithelial cell surface antigen, MIC18, T3E, T-cell surface antigen T3/Leu-4 epsilon chain, CD3e, CD3E, T-cell surface glycoprotein CD3 epsilon chain
<b>Purification</b>	Protein A/G purified from cell culture supernatant.

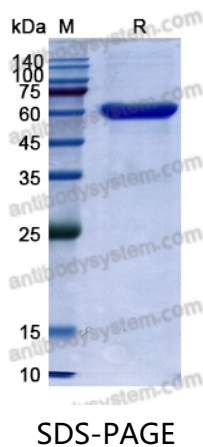
---

**Recombinant Proteins & Antibodies**

<b>Endotoxin level</b>	Please contact with the lab for this information.
<b>Expression system</b>	Mammalian Cells
<b>Accession</b>	P16422 & P07766
<b>Stability and Storage</b>	Use a manual defrost freezer and avoid repeated freeze-thaw cycles. Store at 4°C short term (1-2 weeks). Store at -20°C 12 months. Store at -80°C long term.
<b>Note</b>	For research use only. Not suitable for clinical or therapeutic use.

## Data Image

---



SDS PAGE for Solitomab