

# Anti-ARHGEF1 Antibody (R3Z31)

## Summary

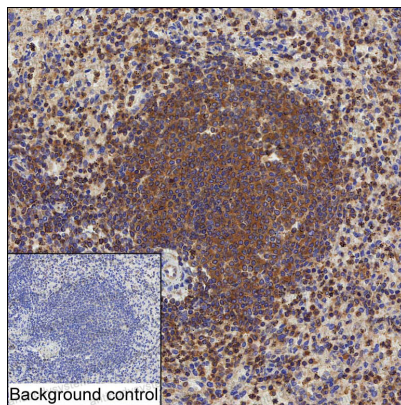
---

<b>Catalog No.</b>	RHK71001
<b>Clone ID</b>	R3Z31
<b>Host species</b>	Mouse
<b>Tested applications</b>	IHC: 1:100-1:200, IP: 1:100-1:200
<b>Species reactivity</b>	Human
<b>Form</b>	Liquid
<b>Storage buffer</b>	0.01M PBS, pH 7.4, 0.05% Sodium Azide.
<b>Concentration</b>	1 mg/ml
<b>Purity</b>	>95% as determined by SDS-PAGE.
<b>Clonality</b>	Monoclonal
<b>Isotype</b>	IgG2b
<b>Applications</b>	IHC, IP
<b>Target</b>	p115-RhoGEF, p115RhoGEF, 115 kDa guanine nucleotide exchange factor, Sub1.5, Rho guanine nucleotide exchange factor 1, ARHGEF1
<b>Purification</b>	Protein A/G purified from cell culture supernatant.
<b>Endotoxin level</b>	Please contact with the lab for this information.
<b>Accession</b>	Q92888
<b>Stability and Storage</b>	Use a manual defrost freezer and avoid repeated freeze-thaw cycles. Store at 4°C short term (1-2 weeks). Store at -20°C 12 months. Store at -80°C long term.

**Note**

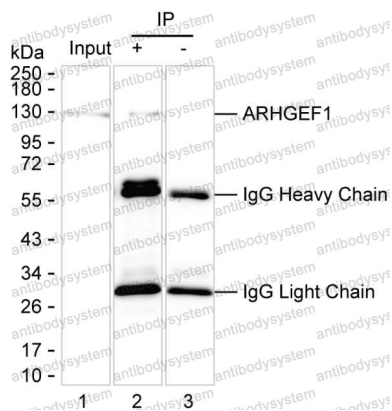
For research use only.

## Data Image



Immunohistochemical

IHC-P analysis of spleen tissue by ARHGEF1 antibody (RHK71001). IHC-P was performed using sections of the formalin-fixed paraffin-embedded spleen tissue; Result: Cells in red pulp and white pulp are positively stained at the cytoplasm.



Immunoprecipitation

Lane 1: HEK-293 lysate; Lane 2: ARHGEF1 immunoprecipitated from HEK-293 lysate by RHK71001; Lane 3: The same Lane 2 but use IgG isotype control antibody ; Result: RHK71001 can immunoprecipitate ARHGEF1;