

Anti-PIKFYVE Antibody (R3Z30)

Summary

Catalog No.	RHK70801
Clone ID	R3Z30
Host species	Mouse
Tested applications	IHC: 1:100-1:200
Species reactivity	Human
Form	Liquid
Storage buffer	0.01M PBS, pH 7.4, 0.05% Sodium Azide.
Concentration	1 mg/ml
Purity	>95% as determined by SDS-PAGE.
Clonality	Monoclonal
Isotype	IgG2b
Applications	IHC
Target	Serine-protein kinase PIKFYVE, Phosphatidylinositol 3-phosphate 5-kinase, PIKfyve, 1-phosphatidylinositol 3-phosphate 5-kinase, PIKFYVE, FYVE finger-containing phosphoinositide kinase, Type III PIP kinase, PIPkin-III, KIAA0981, PIP5K3, Phosphatidylinositol 3-phosphate 5-kinase type III
Purification	Protein A/G purified from cell culture supernatant.
Endotoxin level	Please contact with the lab for this information.
Accession	Q9Y2I7

Stability and Storage

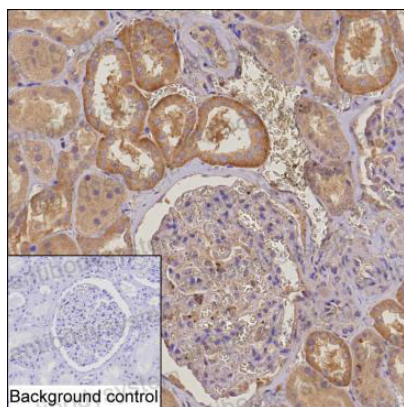
Use a manual defrost freezer and avoid repeated freeze-thaw cycles.

Store at 4°C short term (1-2 weeks). Store at -20°C 12 months. Store at -80°C long term.

Note

For research use only.

Data Image



Immunohistochemical

IHC-P analysis of kidney tissue by PIKFYVE antibody (RHK70801). IHC-P was performed using sections of the formalin-fixed paraffin-embedded kidney tissue; Result: Cells in tubules are positively stained at the cytoplasm.