

# Anti-ARFGAP1 Antibody (R3Z23)

## Summary

---

<b>Catalog No.</b>	RHK65701
<b>Clone ID</b>	R3Z23
<b>Host species</b>	Mouse
<b>Tested applications</b>	ELISA: 1:10000, FCM: 1:200-1:400, WB: 1:500-1:2000
<b>Species reactivity</b>	Human, Mouse
<b>Form</b>	Liquid
<b>Storage buffer</b>	0.01M PBS, pH 7.4, 0.05% Sodium Azide.
<b>Concentration</b>	1 mg/ml
<b>Purity</b>	>95% as determined by SDS-PAGE.
<b>Clonality</b>	Monoclonal
<b>Isotype</b>	IgG2b
<b>Applications</b>	ELISA, FCM, WB
<b>Target</b>	ARF1 GAP, ARF1GAP, ADP-ribosylation factor GTPase-activating protein 1, ARFGAP1, ADP-ribosylation factor 1 GTPase-activating protein, ARF GAP 1, ARF1-directed GTPase-activating protein
<b>Purification</b>	Protein A/G purified from cell culture supernatant.
<b>Endotoxin level</b>	Please contact with the lab for this information.
<b>Accession</b>	Q8N6T3

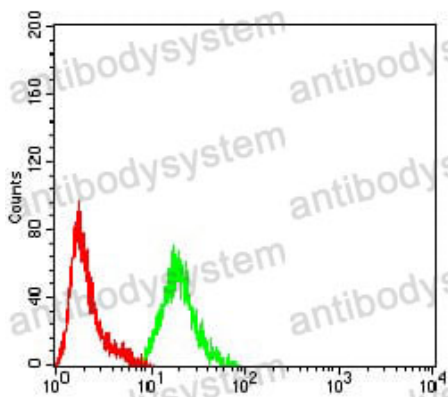
**Stability and Storage**

Use a manual defrost freezer and avoid repeated freeze-thaw cycles.

Store at 4°C short term (1-2 weeks). Store at -20°C 12 months. Store at -80°C long term.

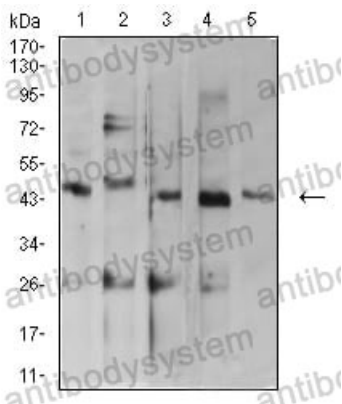
**Note**

For research use only.

**Data Image**

Flow Cytometry

Flow cytometric analysis of HepG2 cells using ARFGAP1 mouse mAb (green) and negative control (red).



Western blot

Western blot analysis using ARFGAP1 mouse mAb against MOLT4 (1), C2C12 (2), HepG2 (3), MCF-7 (4), and Lncap (5) cell lysate.