

Anti-NDEL1 Antibody (R3Z13)

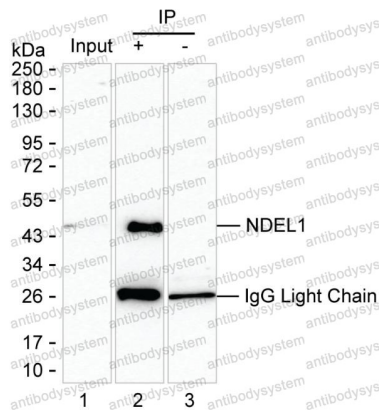
Summary

Catalog No.	RHK55403
Clone ID	R3Z13
Host species	Mouse
Tested applications	IP: 1:100-1:200, WB: 1:500-1:1000
Species reactivity	Human, Mouse, Rat
Form	Liquid
Storage buffer	0.01M PBS, pH 7.4, 0.05% Sodium Azide.
Concentration	1 mg/ml
Purity	>95% as determined by SDS-PAGE.
Clonality	Monoclonal
Isotype	IgG2b
Applications	IP, WB
Target	Protein Nudel, EOPA, Nuclear distribution protein nudE-like 1, NUDEL, MITAP1, NDEL1, Mitosin-associated protein 1
Purification	Protein A/G purified from cell culture supernatant.
Endotoxin level	Please contact with the lab for this information.
Accession	Q9GZM8
Stability and Storage	Use a manual defrost freezer and avoid repeated freeze-thaw cycles. Store at 4°C short term (1-2 weeks). Store at -20°C 12 months. Store at -80°C long term.

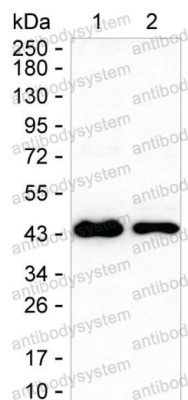
Note

For research use only.

Data Image



Immunoprecipitation



Western blot

Lane 1: Mouse brain tissue lysate ; Lane 2: NDEL1 immunoprecipitated from mouse brain tissue lysate by RHK55403; Lane 3: The same as Lane 2 but use IgG isotype control antibody ; Result: RHK55403 can immunoprecipitate NDEL1;

Western blot analysis using NDEL1 mouse mAb against mouse brain and rat brain