

# Anti-KAT8 Antibody (R3Z11)

## Summary

---

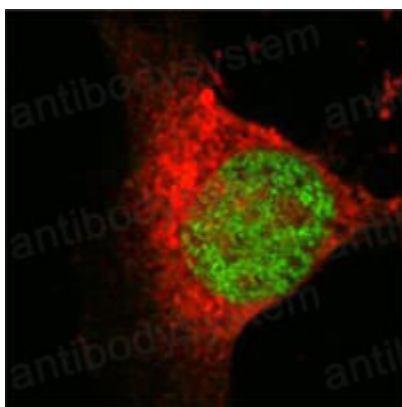
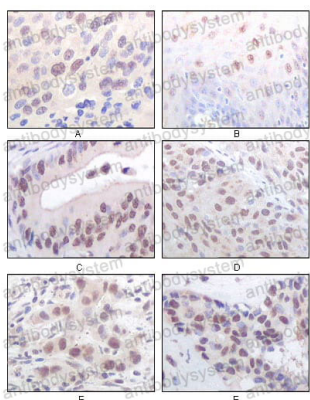
<b>Catalog No.</b>	RHK54201
<b>Clone ID</b>	R3Z11
<b>Host species</b>	Mouse
<b>Tested applications</b>	IF: 1:200-1:1000, IHC: 1:200-1:1000, WB: 1:500-1:2000
<b>Species reactivity</b>	Human
<b>Form</b>	Liquid
<b>Storage buffer</b>	0.01M PBS, pH 7.4, 0.05% Sodium Azide.
<b>Concentration</b>	1 mg/ml
<b>Purity</b>	>95% as determined by SDS-PAGE.
<b>Clonality</b>	Monoclonal
<b>Isotype</b>	IgG2b
<b>Applications</b>	IF, IHC, WB
<b>Target</b>	MYST-1, hMOF, Histone acetyltransferase KAT8, MOZ, YBF2/SAS3, SAS2 and TIP60 protein 1, KAT8, MYST1, MOF, Lysine acetyltransferase 8
<b>Purification</b>	Protein A/G purified from cell culture supernatant.
<b>Endotoxin level</b>	Please contact with the lab for this information.
<b>Accession</b>	Q9H7Z6
<b>Stability and Storage</b>	Use a manual defrost freezer and avoid repeated freeze-thaw cycles. Store at 4°C short term (1-2 weeks). Store at -20°C 12 months. Store at -80°C long term.

**Note**

For research use only.

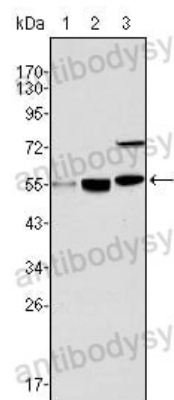
## Data Image

---

**Immunofluorescence****Immunohistochemical**

Confocal Immunofluorescence analysis of Eca 109 cells using MOF/MYST1 mouse mAb (green), showing nuclear localization.

Immunohistochemical analysis of paraffin-embedded human esophageal squamous cell carcinoma (A), normal esophagus epithelium (B), rectum adenocarcinoma (C), lung squamous cell carcinoma (D), breast infiltrating carcinoma (E), and breast infiltrating carcinoma (F) tissues, showing nuclear localization using MOF/MYST1 mouse mAb with DAB staining.



Western blot

Western blot analysis using MYST1 mouse mAb against HeLa (1), HepG2 (2) and SMMC-7721 (3) cell lysate.