

# Anti-CARM1 Antibody (R3Z08)

## Summary

---

<b>Catalog No.</b>	RHK50101
<b>Clone ID</b>	R3Z08
<b>Host species</b>	Mouse
<b>Tested applications</b>	FCM: 1:200-1:400, IF: 1:200-1:1000, IHC: 1:200-1:1000, WB: 1:500-1:2000
<b>Species reactivity</b>	Human, Mouse, Rat, Rabbit, Monkey
<b>Form</b>	Liquid
<b>Storage buffer</b>	0.01M PBS, pH 7.4, 0.05% Sodium Azide.
<b>Concentration</b>	1 mg/ml
<b>Purity</b>	>95% as determined by SDS-PAGE.
<b>Clonality</b>	Monoclonal
<b>Isotype</b>	IgG1
<b>Applications</b>	FCM, IF, IHC, WB
<b>Target</b>	Histone-arginine methyltransferase CARM1, CARM1, Coactivator-associated arginine methyltransferase 1, PRMT4, Protein arginine N-methyltransferase 4
<b>Purification</b>	Protein A/G purified from cell culture supernatant.
<b>Endotoxin level</b>	Please contact with the lab for this information.
<b>Accession</b>	Q86X55

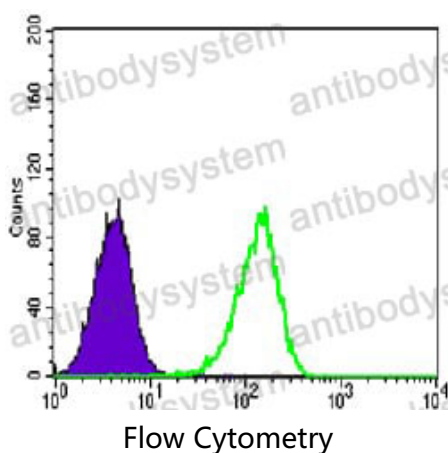
**Stability and Storage**

Use a manual defrost freezer and avoid repeated freeze-thaw cycles.

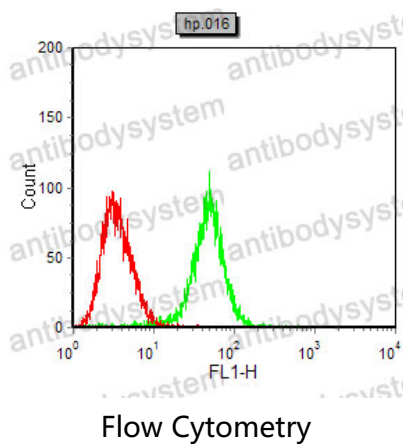
Store at 4°C short term (1-2 weeks). Store at -20°C 12 months. Store at -80°C long term.

**Note**

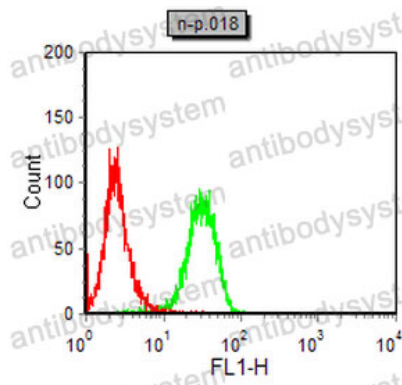
For research use only.

**Data Image**

Flow cytometric analysis of Lovo cells stained with CARM1 mouse mAb (green) and control (purple).

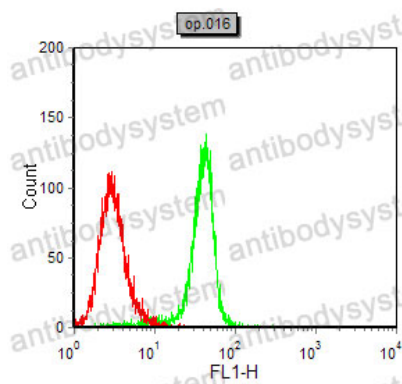


Flow cytometric analysis of Hela cells stained with CARM1 mouse mAb (green) and control (red).



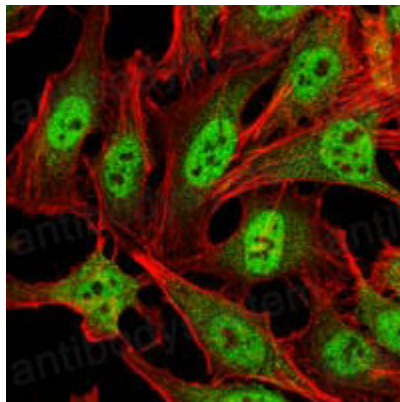
Flow Cytometry

Flow cytometric analysis of NIH/3T3 cells using CARM1 mouse mAb (green) and negative control (red).



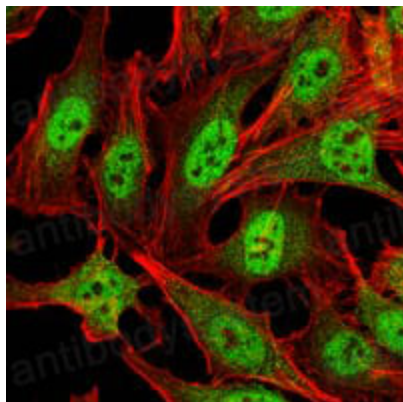
Flow Cytometry

Flow cytometric analysis of COS7 cells using CARM1 mouse mAb (green) and control (red).



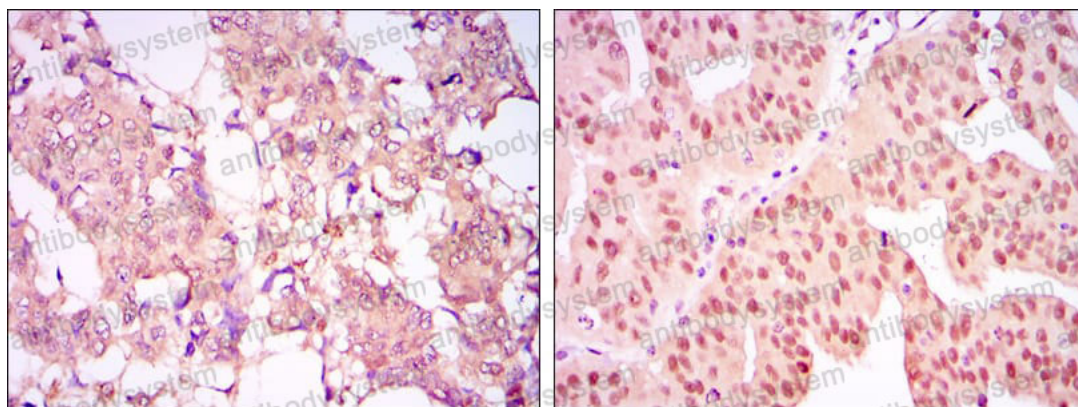
Immunofluorescence

Immunofluorescence analysis of cells using CARM1 mouse mAb (green) and 555 phalloidin. Filaments have been labeled with 555 phalloidin.



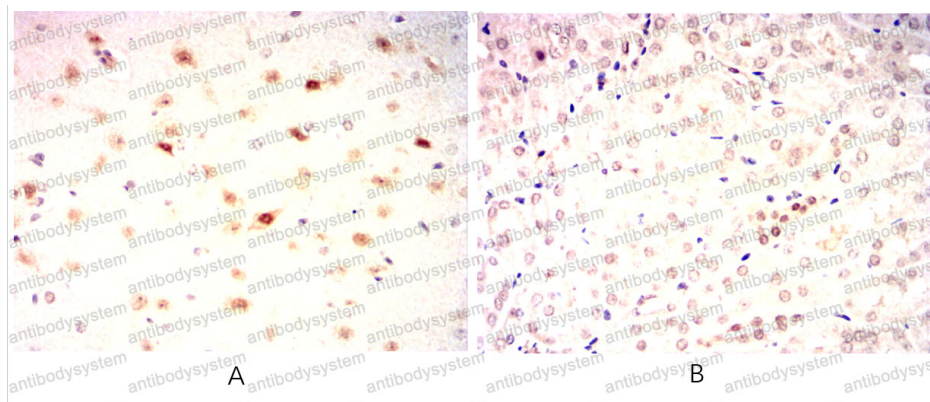
Immunofluorescence

Immunofluorescence analysis of cells showing green fluorescence (CRAM1 mouse mAb) and red fluorescence (555 phalloidin).



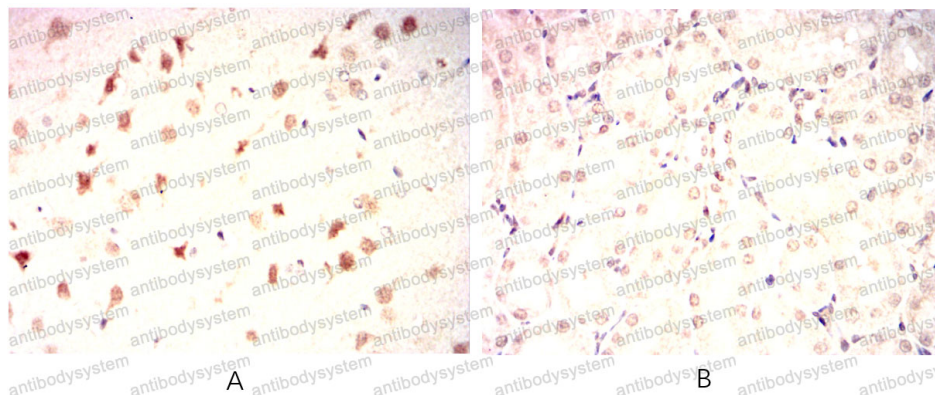
Immunohistochemical

Immunohistochemical analysis of embedded human breast cancer (left) and ovarian cancer tissues (right) using CARM1 mouse mAb with DAB staining.



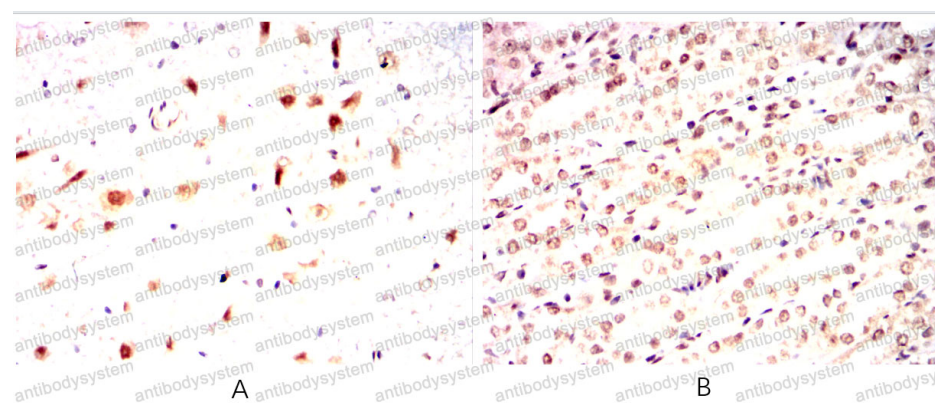
Immunohistochemical

Immunohistochemical analysis of embedded mouse brain (A) and mouse brain (B) using CARM1 mouse mAb with DAB staining.



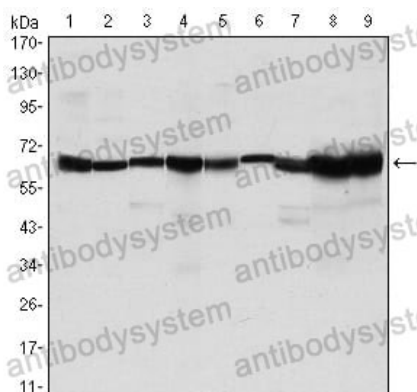
Immunohistochemical

Immunohistochemical analysis of embedded Rat brain(A) Rat kidney(B) using CARM1 mouse mAb with DAB staining.



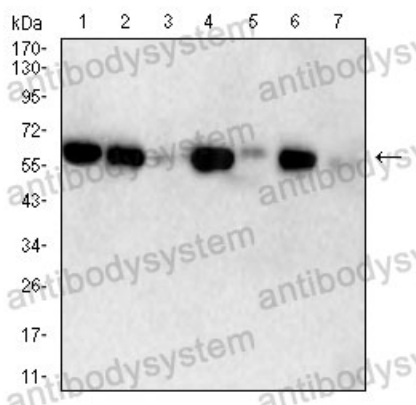
Immunohistochemical

Immunohistochemical analysis of embedded Rabbit kidney(A) using CARM1 mouse mAb with DAB staining.



Western blot

Western blot analysis using CARM1 mouse mAb against MCF-7 (1), Hela (2), PC-12 (3), HL-60 (4), LNCap (5), Jurkat (6), P3 (7), PC-12 (8), and PC-12 (9) cell lysate.



Western blot

Western blot analysis using CARM  
mAb against CHO3D10(1),COS-  
7(2),F9(3),L1210(4),C2C12(5),NIH/  
liver(7) cell lysate.