

# Anti-UHRF1 Antibody (R3Y94)

## Summary

---

<b>Catalog No.</b>	RHK42702
<b>Clone ID</b>	R3Y94
<b>Host species</b>	Mouse
<b>Tested applications</b>	ELISA: 1:10000, FCM: 1:200-1:400, IF: 1:200-1:1000, IHC: 1:200-1:1000, WB: 1:500-1:2000
<b>Species reactivity</b>	Human
<b>Form</b>	Liquid
<b>Storage buffer</b>	0.01M PBS, pH 7.4, 0.05% Sodium Azide.
<b>Concentration</b>	1 mg/ml
<b>Purity</b>	>95% as determined by SDS-PAGE.
<b>Clonality</b>	Monoclonal
<b>Isotype</b>	IgG2b
<b>Applications</b>	ELISA, FCM, IF, IHC, WB
<b>Target</b>	Nuclear zinc finger protein Np95, RING-type E3 ubiquitin transferase UHRF1, RING finger protein 106, Transcription factor ICBP90, E3 ubiquitin-protein ligase UHRF1, Ubiquitin-like PHD and RING finger domain-containing protein 1, NP95, HuNp95, Nuclear protein 95, RNF106, ICBP90, hNp95, UHRF1, Inverted CCAAT box-binding protein of 90 kDa, hUHRF1, Ubiquitin-like-containing PHD and RING finger domains protein 1
<b>Purification</b>	Protein A/G purified from cell culture supernatant.
<b>Endotoxin level</b>	Please contact with the lab for this information.

**Accession** Q96T88

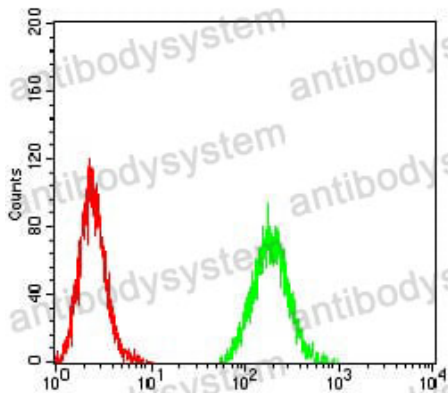
Use a manual defrost freezer and avoid repeated freeze-thaw cycles.

**Stability and Storage** Store at 4°C short term (1-2 weeks). Store at -20°C 12 months. Store at -80°C long term.

**Note** For research use only.

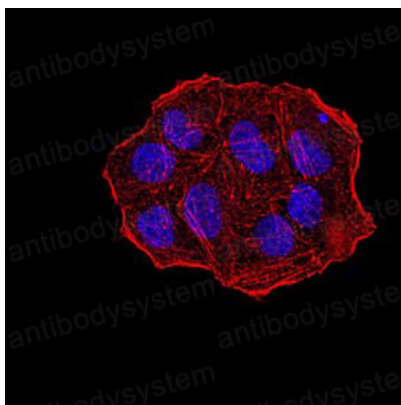
## Data Image

---



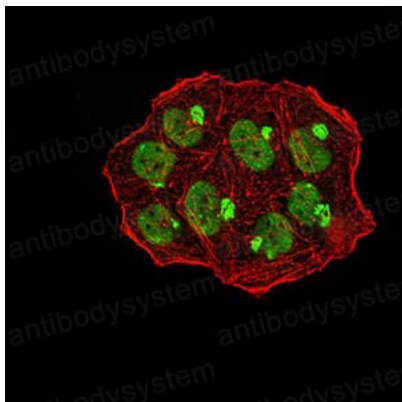
Flow Cytometry

Flow cytometric analysis of MCF-7 cells using UHRF1 mouse mAb (green) and negative control (red).



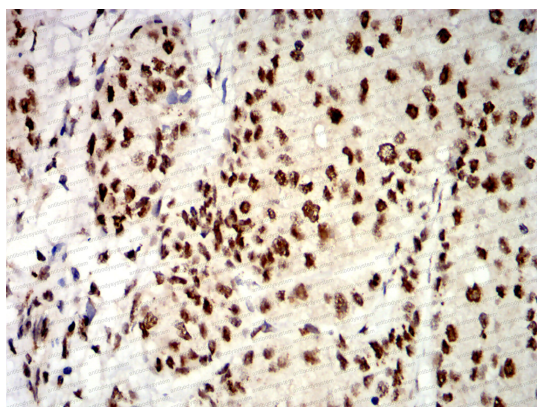
Immunofluorescence

Immunofluorescence analysis of HeLa cells using UHRF1 mouse mAb. Blue: DRAQ5 fluorescent DNA dye. Red: Actin filaments have been labeled with Alexa Fluor-555 phalloidin.



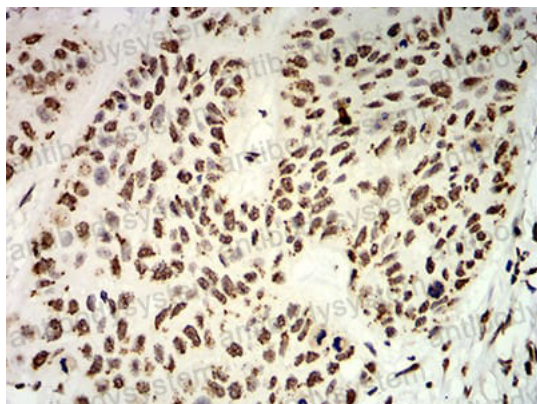
Immunofluorescence

Immunofluorescence analysis of HeLa cells using UHRF1 mouse mAb (green). Blue: DRAQ5 fluorescent DNA dye. Red: Actin filaments have been labeled with Alexa Fluor- 555 phalloidin.



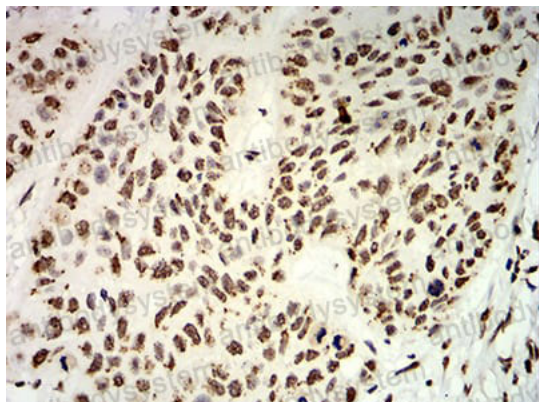
Immunohistochemical

Immunohistochemical analysis of paraffin-embedded human bladder cancer tissues using UHRF1 mouse mAb with DAB staining.



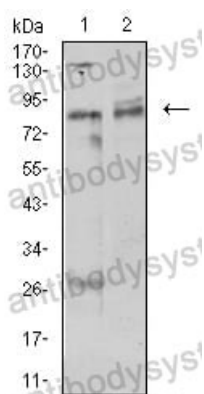
Immunohistochemical

Immunohistochemical analysis of paraffin-embedded human esophageal cancer tissues using UHRF1 mouse mAb with DAB staining.



Immunohistochemical

Immunohistochemical analysis of paraffin-embedded human esophageal cancer tissues using UHRF1 mouse mAb with DAB staining.



Western blot

Western blot analysis using UHRF1 mouse mAb against MCF-7 (1) and Hela (2) cell lysate.