

Anti-KMT5A Antibody (R3Y85)

Summary

Catalog No.	RHK39202
Clone ID	R3Y85
Host species	Mouse
Tested applications	ELISA: 1:10000, FCM: 1:200-1:400, IHC: 1:200-1:1000
Species reactivity	Human
Form	Liquid
Storage buffer	0.01M PBS, pH 7.4, 0.05% Sodium Azide.
Concentration	1 mg/ml
Purity	>95% as determined by SDS-PAGE.
Clonality	Monoclonal
Isotype	IgG1
Applications	ELISA, FCM, IHC
Target	Histone-lysine N-methyltransferase KMT5A, PR/SET07, SETD8, SET8, PR-Set7, Lysine N-methyltransferase 5A, PRSET7, N-lysine methyltransferase KMT5A, SET domain-containing protein 8, Lysine-specific methylase 5A, H4-K20-HMTase KMT5A, SET07, KMT5A, PR/SET domain-containing protein 07
Purification	Protein A/G purified from cell culture supernatant.
Endotoxin level	Please contact with the lab for this information.
Accession	Q9NQR1

Stability and Storage

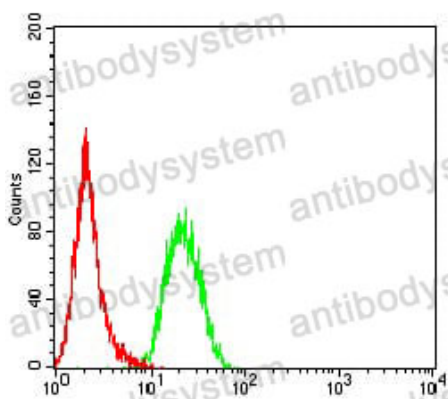
Use a manual defrost freezer and avoid repeated freeze-thaw cycles.

Store at 4°C short term (1-2 weeks). Store at -20°C 12 months. Store at -80°C long term.

Note

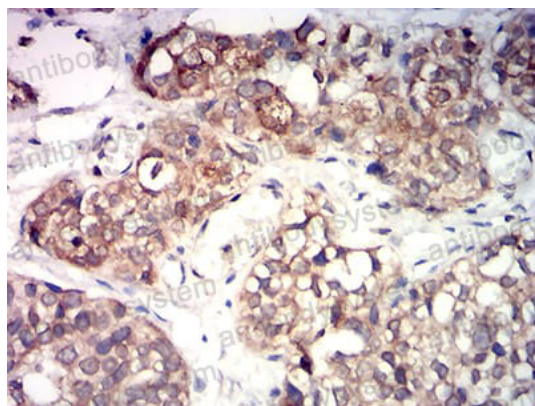
For research use only.

Data Image



Flow Cytometry

Flow cytometric analysis of Hela cells using KMT5A mouse mAb (green) and negative control (red).



Immunohistochemical

Immunohistochemical analysis of paraffin-embedded human bladder cancer tissues using KMT5A mouse mAb with DAB staining.