

Anti-KMT5A Antibody (R3Y84)

Summary

| | |
|----------------------------|--|
| Catalog No. | RHK39201 |
| Clone ID | R3Y84 |
| Host species | Mouse |
| Tested applications | ELISA: 1:10000, FCM: 1:200-1:400, IF: 1:200-1:500 |
| Species reactivity | Human |
| Form | Liquid |
| Storage buffer | 0.01M PBS, pH 7.4, 0.05% Sodium Azide. |
| Concentration | 1 mg/ml |
| Purity | >95% as determined by SDS-PAGE. |
| Clonality | Monoclonal |
| Isotype | IgG1 |
| Applications | ELISA, FCM, IF |
| Target | Histone-lysine N-methyltransferase KMT5A, PR/SET07, SETD8, SET8, PR-Set7, Lysine N-methyltransferase 5A, PRSET7, N-lysine methyltransferase KMT5A, SET domain-containing protein 8, Lysine-specific methylase 5A, H4-K20-HMTase KMT5A, SET07, KMT5A, PR/SET domain-containing protein 07 |
| Purification | Protein A/G purified from cell culture supernatant. |
| Endotoxin level | Please contact with the lab for this information. |
| Accession | Q9NQR1 |

Stability and Storage

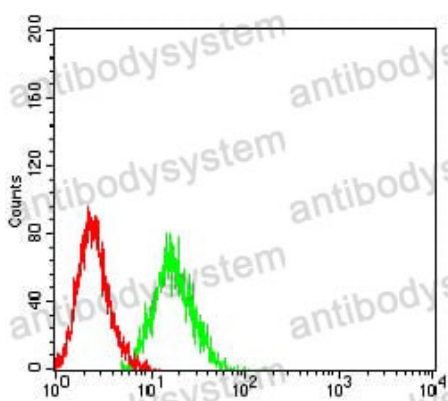
Use a manual defrost freezer and avoid repeated freeze-thaw cycles.

Store at 4°C short term (1-2 weeks). Store at -20°C 12 months. Store at -80°C long term.

Note

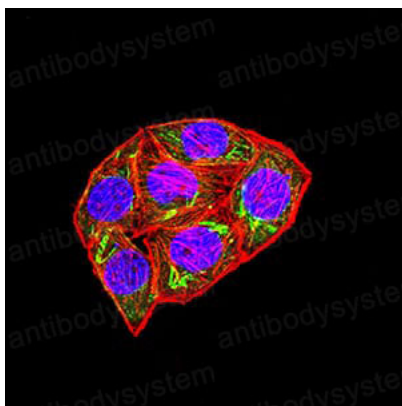
For research use only.

Data Image



Flow Cytometry

Flow cytometric analysis of HL-60 cells using KMT5A mouse mAb (green) and negative control (red).



Immunofluorescence

Immunofluorescence analysis of HeLa cells using KMT5A mouse mAb (green). Blue: DRAQ5 fluorescent DNA dye. Red: Actin filaments have been labeled with Alexa Fluor- 555 phalloidin.