

Anti-KDM3A Antibody (R3Y83)

Summary

Catalog No.	RHK37802
Clone ID	R3Y83
Host species	Mouse
Tested applications	ELISA: 1:10000, FCM: 1:200-1:400
Species reactivity	Human
Form	Liquid
Storage buffer	0.01M PBS, pH 7.4, 0.05% Sodium Azide.
Concentration	1 mg/ml
Purity	>95% as determined by SDS-PAGE.
Clonality	Monoclonal
Isotype	IgG1
Applications	ELISA, FCM
Target	KIAA0742, KDM3A, JMJD1, Jumonji domain-containing protein 1A, Lysine-specific demethylase 3A, [histone H3]-dimethyl-L-lysine(9) demethylase 3A, JmjC domain-containing histone demethylation protein 2A, TSGA, JHDM2A, JMJD1A
Purification	Protein A/G purified from cell culture supernatant.
Endotoxin level	Please contact with the lab for this information.
Accession	Q9Y4C1

Stability and Storage

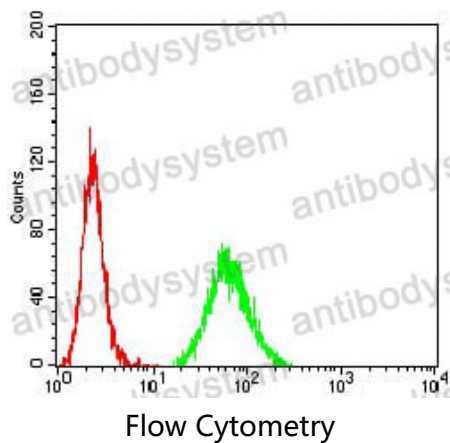
Use a manual defrost freezer and avoid repeated freeze-thaw cycles.

Store at 4°C short term (1-2 weeks). Store at -20°C 12 months. Store at -80°C long term.

Note

For research use only.

Data Image



Flow cytometric analysis of Hela cells using KDM3A mouse mAb (green) and negative control (red).