

Anti-KDM3A Antibody (R3Y80)

Summary

Catalog No.	RHK37801
Clone ID	R3Y80
Host species	Mouse
Tested applications	IHC: 1:200-1:1000, WB: 1:500-1:2000
Species reactivity	Human
Form	Liquid
Storage buffer	0.01M PBS, pH 7.4, 0.05% Sodium Azide.
Concentration	1 mg/ml
Purity	>95% as determined by SDS-PAGE.
Clonality	Monoclonal
Isotype	IgG1
Applications	IHC, WB
Target	KIAA0742, KDM3A, JMJD1, Jumonji domain-containing protein 1A, Lysine-specific demethylase 3A, [histone H3]-dimethyl-L-lysine(9) demethylase 3A, JmjC domain-containing histone demethylation protein 2A, TSGA, JHDM2A, JMJD1A
Purification	Protein A/G purified from cell culture supernatant.
Endotoxin level	Please contact with the lab for this information.
Accession	Q9Y4C1

Stability and Storage

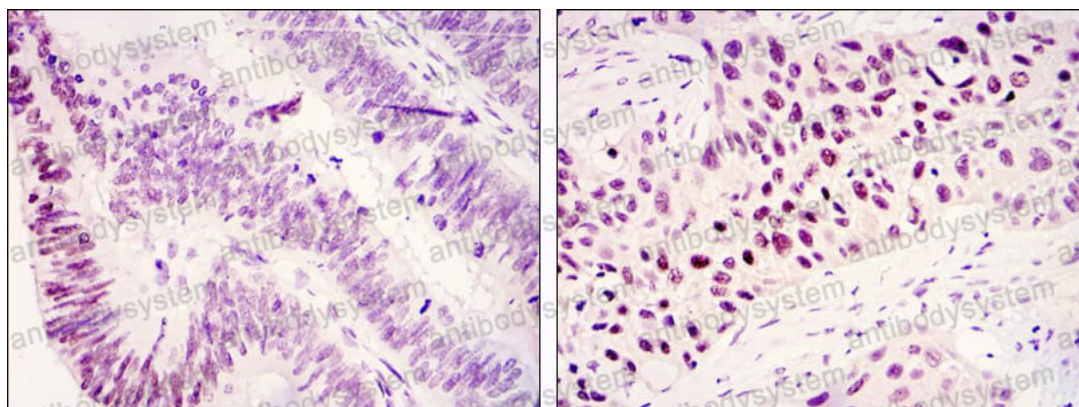
Use a manual defrost freezer and avoid repeated freeze-thaw cycles.

Store at 4°C short term (1-2 weeks). Store at -20°C 12 months. Store at -80°C long term.

Note

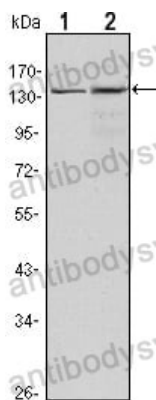
For research use only.

Data Image



Immunohistochemical analysis of paraffin-embedded human colonic cancer tissues (left) and lung cancer tissues (right) using KDM3A mouse mAb with DAB staining.

Immunohistochemical



Western blot analysis using KDM3A mouse mAb against HeLa (1) and HepG2 (2) cell lysate.

Western blot