

# Anti-LIN28A Antibody (R3Y77)

## Summary

---

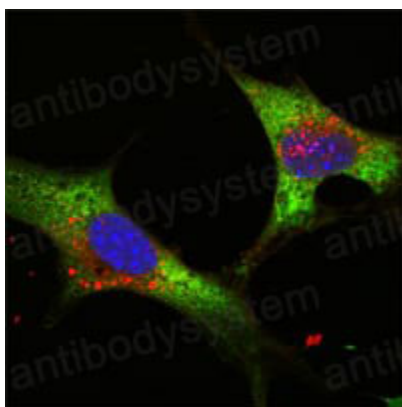
<b>Catalog No.</b>	RHK37001
<b>Clone ID</b>	R3Y77
<b>Host species</b>	Mouse
<b>Tested applications</b>	IF: 1:200-1:1000, WB: 1:500-1:2000
<b>Species reactivity</b>	Human
<b>Form</b>	Liquid
<b>Storage buffer</b>	0.01M PBS, pH 7.4, 0.05% Sodium Azide.
<b>Concentration</b>	1 mg/ml
<b>Purity</b>	>95% as determined by SDS-PAGE.
<b>Clonality</b>	Monoclonal
<b>Isotype</b>	IgG1
<b>Applications</b>	IF, WB
<b>Target</b>	CSDD1, Zinc finger CCHC domain-containing protein 1, LIN28, LIN28A, Lin-28A, Protein lin-28 homolog A, ZCCHC1
<b>Purification</b>	Protein A/G purified from cell culture supernatant.
<b>Endotoxin level</b>	Please contact with the lab for this information.
<b>Accession</b>	Q9H9Z2
<b>Stability and Storage</b>	Use a manual defrost freezer and avoid repeated freeze-thaw cycles. Store at 4°C short term (1-2 weeks). Store at -20°C 12 months. Store at -80°C long term.

**Note**

For research use only.

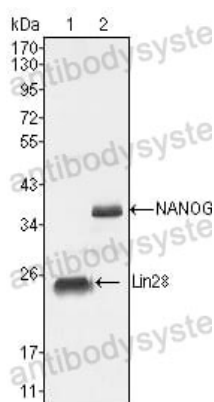
## Data Image

---



Immunofluorescence

Confocal Immunofluorescence analysis of NTERA-2 cells using LIN28 mouse mAb (green). Blue: DRAQ5 fluorescent DNA dye.



Western blot

Western blot analysis using LIN28 mouse mAb against NTERA-2 cell lysate (1).