

Anti-ASF1B Antibody (R3Y60)

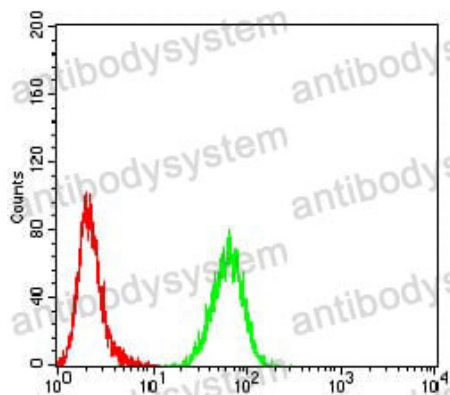
Summary

Catalog No.	RHK21502
Clone ID	R3Y60
Host species	Mouse
Tested applications	ELISA: 1:10000, FCM: 1:200-1:400, WB: 1:500-1:2000
Species reactivity	Human, Mouse, Monkey
Form	Liquid
Storage buffer	0.01M PBS, pH 7.4, 0.05% Sodium Azide.
Concentration	1 mg/ml
Purity	>95% as determined by SDS-PAGE.
Clonality	Monoclonal
Isotype	IgG1
Applications	ELISA, FCM, WB
Target	ASF1B, hAsf1, hCIA-II, CIA-II, hAsf1b, Histone chaperone ASF1B, Anti-silencing function protein 1 homolog B, CCG1-interacting factor A-II
Purification	Protein A/G purified from cell culture supernatant.
Endotoxin level	Please contact with the lab for this information.
Accession	Q9NVP2
Stability and Storage	Use a manual defrost freezer and avoid repeated freeze-thaw cycles. Store at 4°C short term (1-2 weeks). Store at -20°C 12 months. Store at -80°C long term.

Note

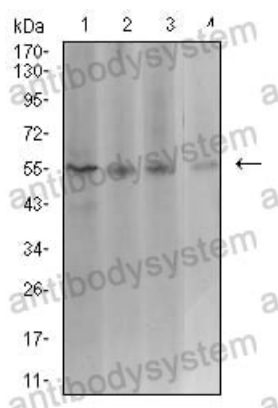
For research use only.

Data Image



Flow Cytometry

Flow cytometric analysis of K562 cells using ASF1B mouse mAb (green) and negative control (red).



Western blot

Western blot analysis using ASF1B mouse mAb against Hela (1), COS7 (2), HCT116 (3), and CHO3D10 (4) cell lysate.