

Anti-SETD7 Antibody (R3Y57)

Summary

Catalog No.	RHK20402
Clone ID	R3Y57
Host species	Mouse
Tested applications	ELISA: 1:10000, IHC: 1:200-1:1000, WB: 1:500-1:2000
Species reactivity	Human, Rat, Monkey
Form	Liquid
Storage buffer	0.01M PBS, pH 7.4, 0.05% Sodium Azide.
Concentration	1 mg/ml
Purity	>95% as determined by SDS-PAGE.
Clonality	Monoclonal
Isotype	IgG1
Applications	ELISA, IHC, WB
Target	Lysine N-methyltransferase 7, SET9, SET7/9, Histone H3-K4 methyltransferase SETD7, SET7, SET domain-containing protein 7, SETD7, H3-K4-HMTase SETD7, KIAA1717, Histone-lysine N-methyltransferase SETD7, KMT7
Purification	Protein A/G purified from cell culture supernatant.
Endotoxin level	Please contact with the lab for this information.
Accession	Q8WTS6

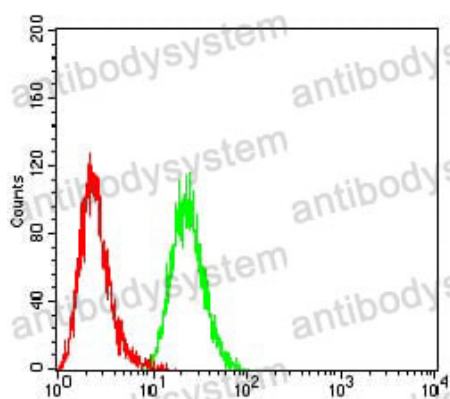
Stability and Storage

Use a manual defrost freezer and avoid repeated freeze-thaw cycles.

Store at 4°C short term (1-2 weeks). Store at -20°C 12 months. Store at -80°C long term.

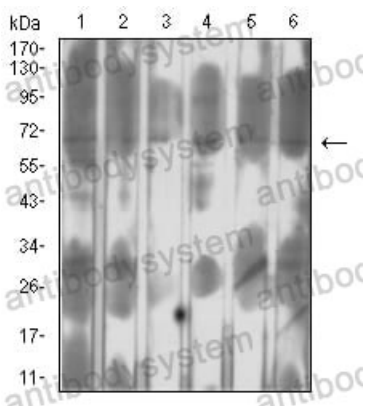
Note

For research use only.

Data Image

Immunohistochemical

Immunohistochemical analysis of paraffin-embedded human Hela tissues using SETD7 mouse mAb with DAB staining.



Western blot

Western blot analysis using SETD7 mouse mAb against MCF-7 (1), Hela (2), A549 (3), COS7 (4), Jurkat (5), and PC-12 (6) cell lysate.