

# Anti-SETD7 Antibody (R3Y56)

## Summary

---

<b>Catalog No.</b>	RHK20403
<b>Clone ID</b>	R3Y56
<b>Host species</b>	Mouse
<b>Tested applications</b>	ELISA: 1:10000, FCM: 1:200-1:400, WB: 1:500-1:2000
<b>Species reactivity</b>	Human, Rat, Monkey
<b>Form</b>	Liquid
<b>Storage buffer</b>	0.01M PBS, pH 7.4, 0.05% Sodium Azide.
<b>Concentration</b>	1 mg/ml
<b>Purity</b>	>95% as determined by SDS-PAGE.
<b>Clonality</b>	Monoclonal
<b>Isotype</b>	IgG2a
<b>Applications</b>	ELISA, FCM, WB
<b>Target</b>	Lysine N-methyltransferase 7, SET9, SET7/9, Histone H3-K4 methyltransferase SETD7, SET7, SET domain-containing protein 7, SETD7, H3-K4-HMTase SETD7, KIAA1717, Histone-lysine N-methyltransferase SETD7, KMT7
<b>Purification</b>	Protein A/G purified from cell culture supernatant.
<b>Endotoxin level</b>	Please contact with the lab for this information.
<b>Accession</b>	Q8WTS6

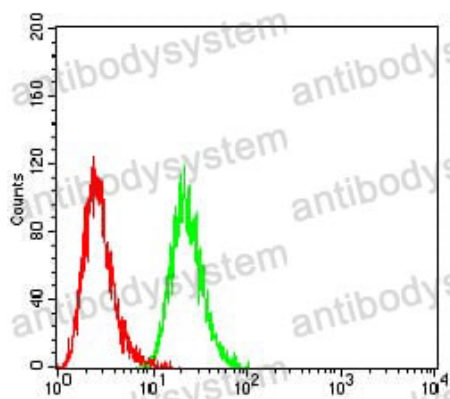
**Stability and Storage**

Use a manual defrost freezer and avoid repeated freeze-thaw cycles.

Store at 4°C short term (1-2 weeks). Store at -20°C 12 months. Store at -80°C long term.

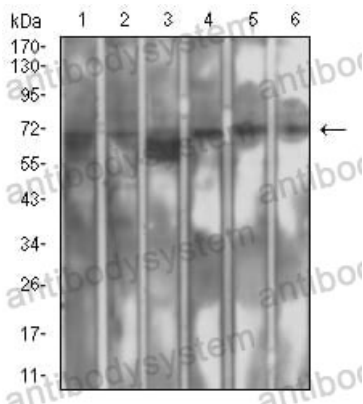
**Note**

For research use only.

**Data Image**

Flow Cytometry

Flow cytometric analysis of HeLa cells using SETD7 mouse mAb (green) and negative control (red).



Western blot

Western blot analysis using SETD7 mouse mAb against MCF-7 (1), HeLa (2), A549 (3), COS7 (4), Jurkat (5), and PC-12 (6) cell lysate.