

Anti-SETD2 Antibody (R3Y55)

Summary

Catalog No.	RHK20202
Clone ID	R3Y55
Host species	Mouse
Tested applications	ELISA: 1:10000, FCM: 1:200-1:400
Species reactivity	Human
Form	Liquid
Storage buffer	0.01M PBS, pH 7.4, 0.05% Sodium Azide.
Concentration	1 mg/ml
Purity	>95% as determined by SDS-PAGE.
Clonality	Monoclonal
Isotype	IgG1
Applications	ELISA, FCM
Target	Protein-lysine N-methyltransferase SETD2, HYPB, Histone-lysine N-methyltransferase SETD2, KMT3A, SET2, KIAA1732, Huntingtin yeast partner B, HIF-1, Huntingtin-interacting protein B, Huntingtin-interacting protein 1, HIP-1, Lysine N-methyltransferase 3A, SET domain-containing protein 2, p231HBP, SETD2, HIF1, hSET2
Purification	Protein A/G purified from cell culture supernatant.
Endotoxin level	Please contact with the lab for this information.
Accession	Q9BYW2

Stability and Storage

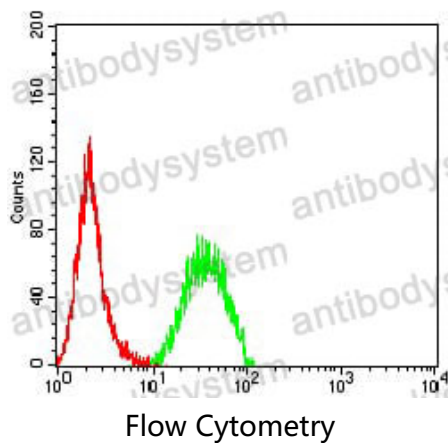
Use a manual defrost freezer and avoid repeated freeze-thaw cycles.

Store at 4°C short term (1-2 weeks). Store at -20°C 12 months. Store at -80°C long term.

Note

For research use only.

Data Image



Flow cytometric analysis of Hela cells using SETD2 mouse mAb (green) and negative control (red).