

Anti-SIGLEC8/SAF-2 Antibody (R3Y53)

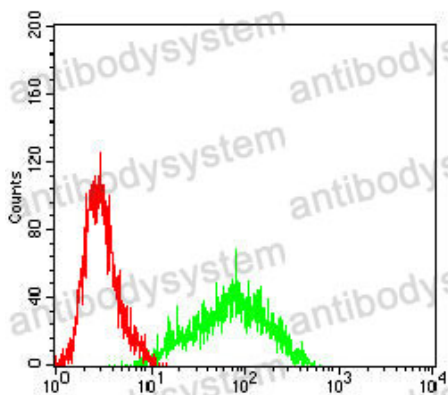
Summary

Catalog No.	RHK16101
Clone ID	R3Y53
Host species	Mouse
Tested applications	ELISA: 1:10000, FCM: 1:200-1:400, IHC: 1:200-1:1000, WB: 1:500-1:2000
Species reactivity	Human, Mouse, Rat
Form	Liquid
Storage buffer	0.01M PBS, pH 7.4, 0.05% Sodium Azide.
Concentration	1 mg/ml
Purity	>95% as determined by SDS-PAGE.
Clonality	Monoclonal
Isotype	IgG2b
Applications	ELISA, FCM, IHC, WB
Target	SAF2, Sialoadhesin family member 2, SAF-2, Siglec-8, SIGLEC8, Sialic acid-binding Ig-like lectin 8
Purification	Protein A/G purified from cell culture supernatant.
Endotoxin level	Please contact with the lab for this information.
Accession	Q9NYZ4
Stability and Storage	Use a manual defrost freezer and avoid repeated freeze-thaw cycles. Store at 4°C short term (1-2 weeks). Store at -20°C 12 months. Store at -80°C long term.

Note

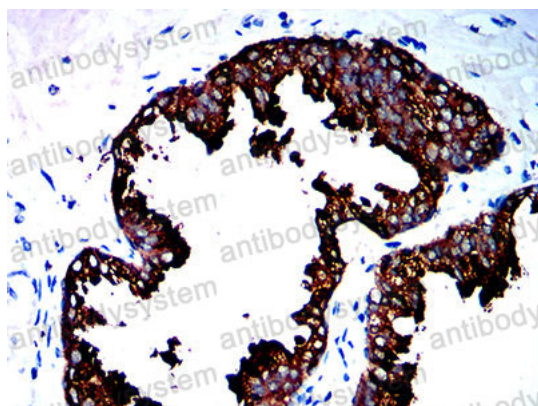
For research use only.

Data Image



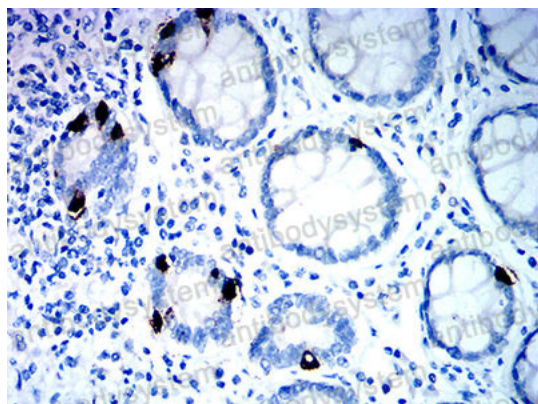
Flow Cytometry

Flow cytometric analysis of Jurkat cells using SIGLEC8 mouse mAb (green) and negative control (red).



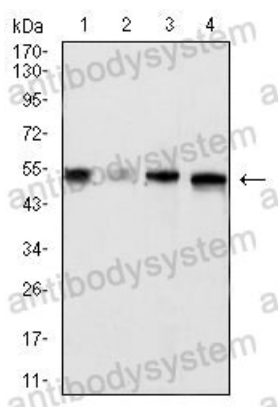
Immunohistochemical

Immunohistochemical analysis of paraffin-embedded human prostate cancer tissues using SIGLEC8 mouse mAb with DAB staining.



Immunohistochemical

Immunohistochemical analysis of paraffin-embedded human rectum tissues using SIGLEC8 mouse mAb with DAB staining.



Western blot

Western blot analysis using SIGLEC8 mouse mAb against mouse Liver (1), rat Liver (2) tissues lysate, MCF-7 (3), and HT-29 (4) cell lysate.